

MetroImage 2.5D/3D

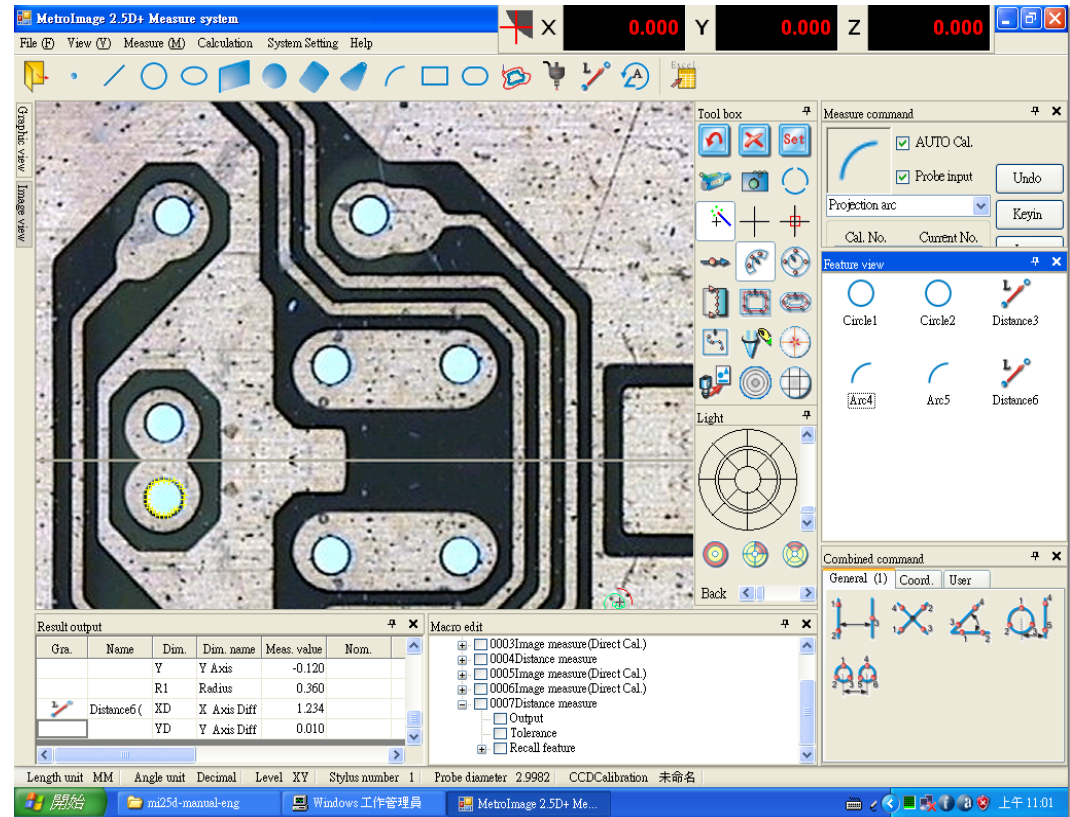
**MetroImage 2.5D/3D**

Image Measuring System Synopsis

**Image Measuring System Synopsis**

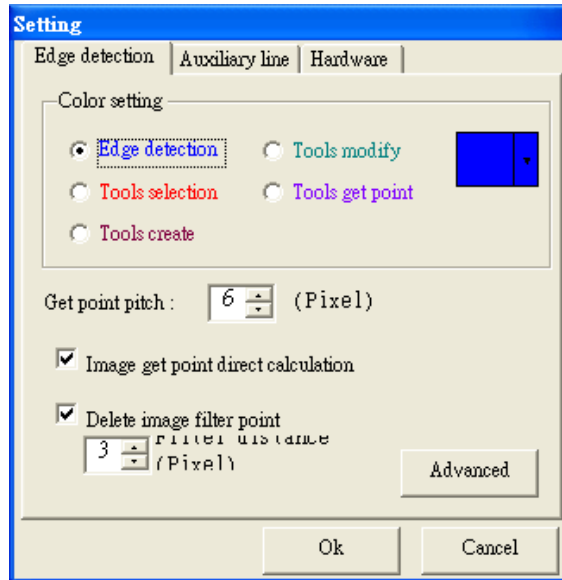
● MetroImage 2.5D/3D general function

- Function windows can flexible layout, hide, closed or open it.
- Automatic saved measure data every 10 minutes. Both user can saved anytime if you are demand.
- Provide English, Traditional Chinese and simplified Chinese operation interface online change by user.
- General geometrical measure function: point, line, circle, arc, ellipse, square bolt and round bolt and curv.
- Featuer Calculation: angle, distance, intersection point, middle point, line.....etc.
- Geometrical tolerance: Straightness, roundness, parallelism.....etc.
- Completed coordination systems function. Aligment commands, rotate, save and recall the parts coordinate system.

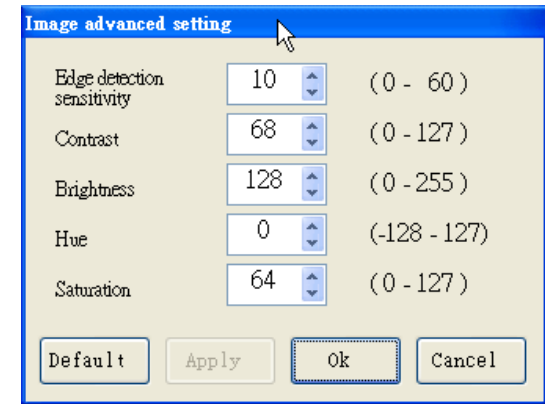


● The best edge detection function

Image edge detection property setting can be set. Edge detect tool color, the pitch of detect, set filter distance that you want to neglect. And the advanced setting you can set the edge detection sensitivity and the CCD image contrast brightness.....etc. get the best detection result.

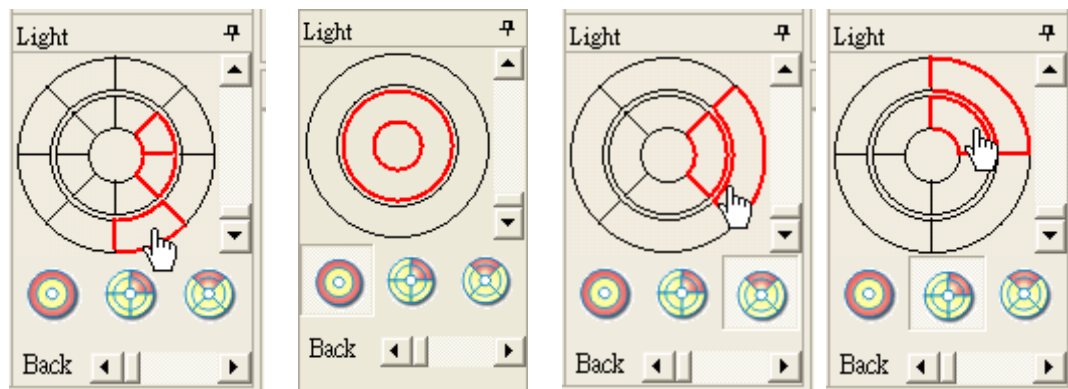


function



to

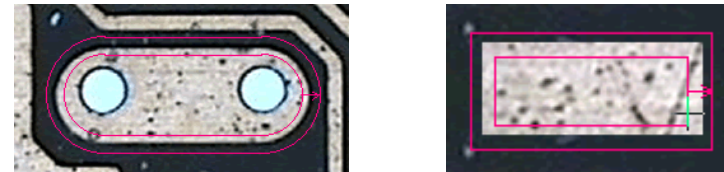
● Ring (surface) light have multi-section control to produce a best video image



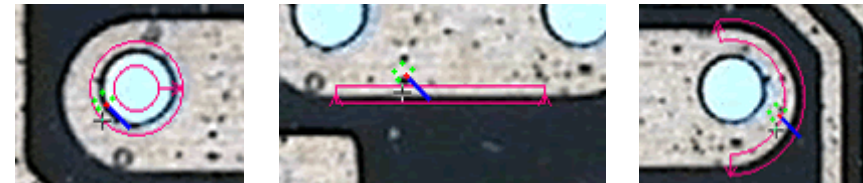
Stage light and ring light are used led luminescence. Ring (Surface) light have four divided type can be divided into 2-16 sections to control. Every section can be split controlled there light intensity to produce a best video image. And you can save the common illumination setting and recall it.

● Smart edge detection tool to simplify the process of measure

- Provided completed edge detection tool. Except traditional tool of point, line, circle and arc. We are provided rounded bolt and square blot.



- Image detection tool: automatic judging what detection tool will be used and setting detected region by work-piece edge shape.



- Image easy get point tool: this tool changed mouse indicaor to be a crosshair and a square. Moved the indicator to the work-piece edge. If it deteced a edge point the square bolt will change red.

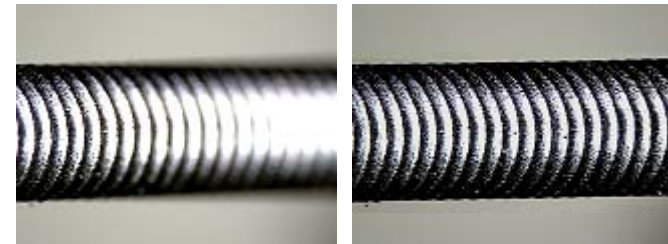
- Center edge detection tool: this is an auto-detected crosshair auxiliary line. Moved the stage when deteced edge the crosshair will change to red color.
- Circular and box auxiliary line tool. You can used keyboards up,down,right and left key to change box tool wide and circle diameter.

● Solid parts combined focus function. A variety of measuring graph handle function

● Image combine focus function

This function can to get a clear solid parts image in one image frame. This combine

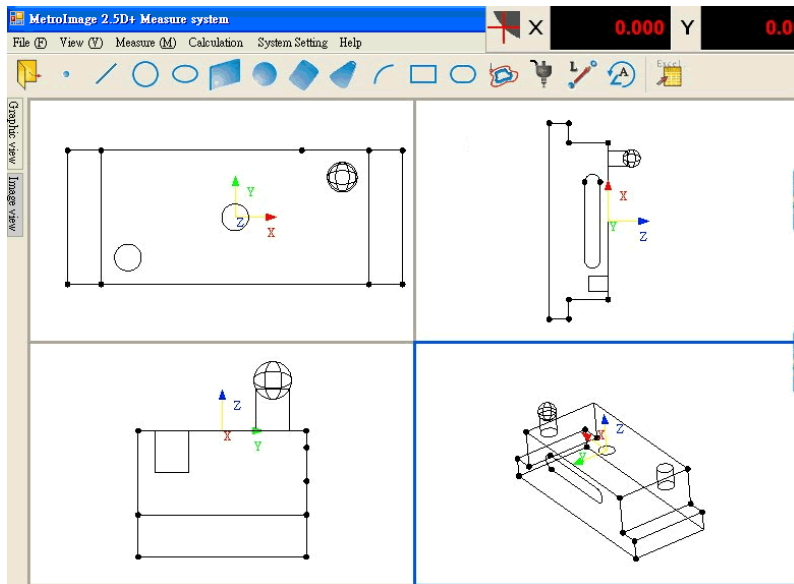
images you can to measured, save, paste to graph view function windows with measureing element graph.



Before

After

● Measuring element graph view function

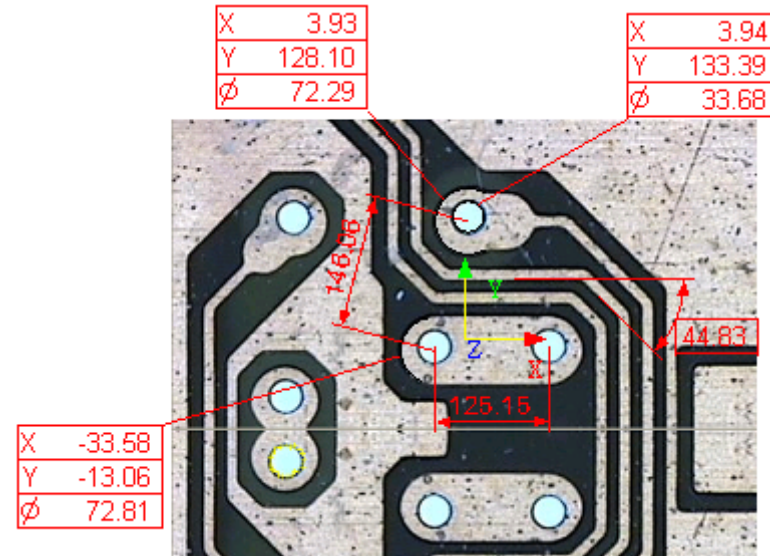
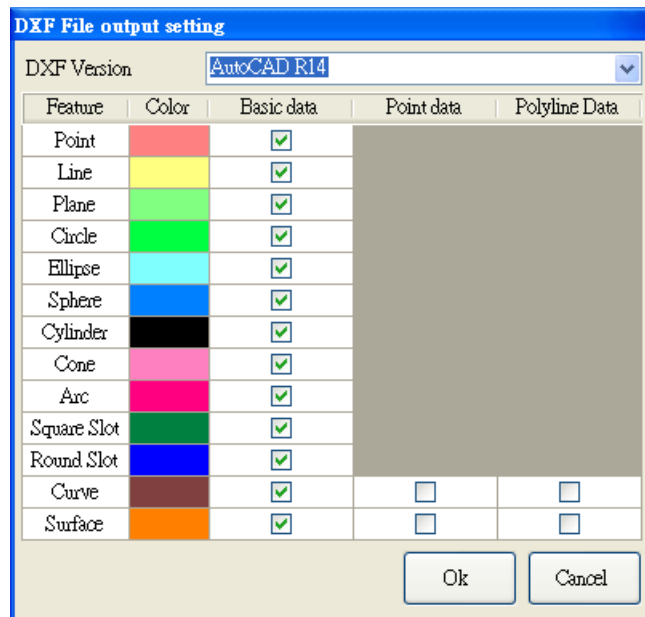


At graph view windows you can divide 1-4 sub-windows to view sectional drawing. Every sub-windows you can set 3D viewpoint or to roate it

- Measuring graph mix with parts image

This software provided capture complete parts image or read in parts image to

Graph view function windows to mix with measuring elemnt. To assort diameter label you can clearly understand measure result. This graph you can print with your report chart.



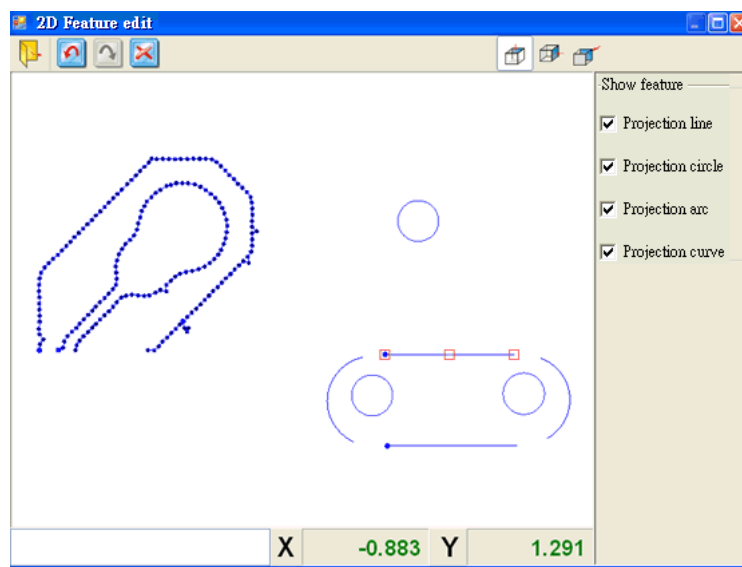
- A variey of graph formate to save

Image graph or measure element graph both can saved a variety of graph formate like bmp, gif, jpeg, wmf.....etc. but measure element graph also can saved as Dxf file format for several AutoCAD version.

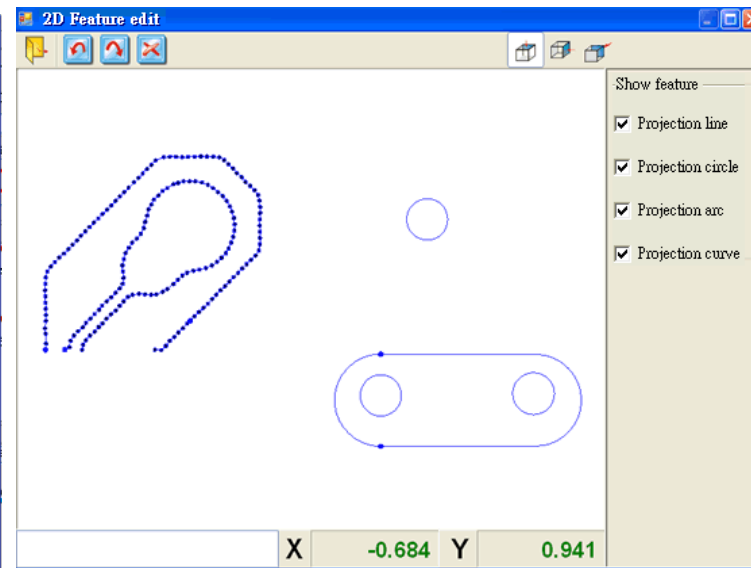
● 2D feature edit function

2D feature edit function can to join adjacent feature and delete featres point.

To sweep away the unusual point.



Before

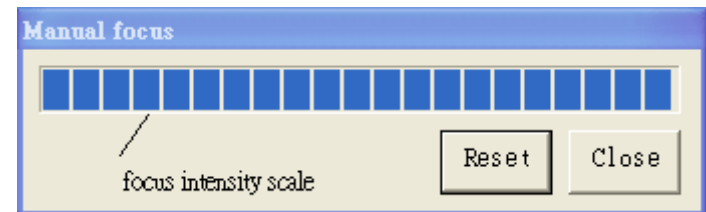
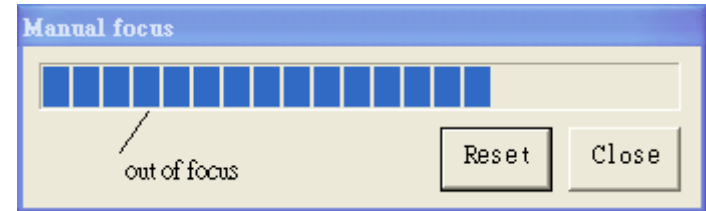


After.

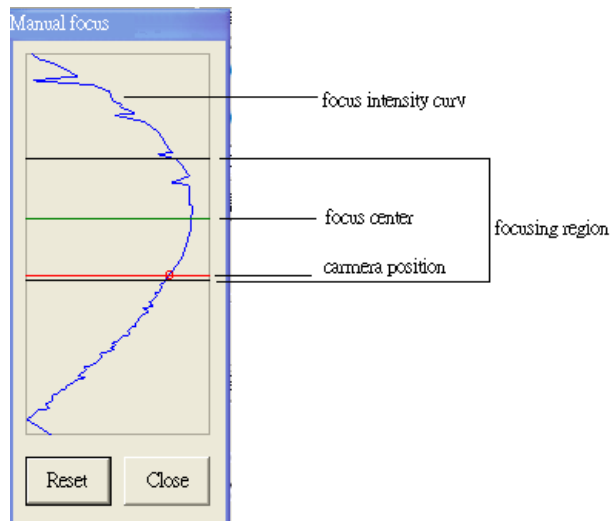
- Manual surface focus function

That have two kind of manual focus. One of for Z axes have scaler the other is for Z axes does not scaler.

- Z axes does not sacler. When you click surface focus function, it generates manual focus progress scale like right diagram. You can move Z axes up and down to increase or reduce graduation. If the graduation is full that is in focus.



- Z axes have scaler. The focus diagram like left side diagram



When you move Z axes up and down can generate a focus curv. You must move Z axes slowly to smooth the curv at focus region. And then move camera position on focus center

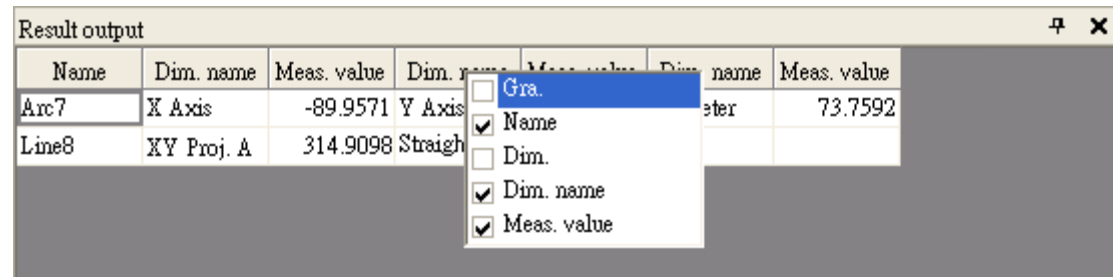
● Variety of measure result display and inspection chart

We have variety of result output item. You can choose what item that you want to show on report. The result output windows you can directly to print or save it as Excel or Word file. Whichever you both can add in parts graph and report title on inspection sheet.

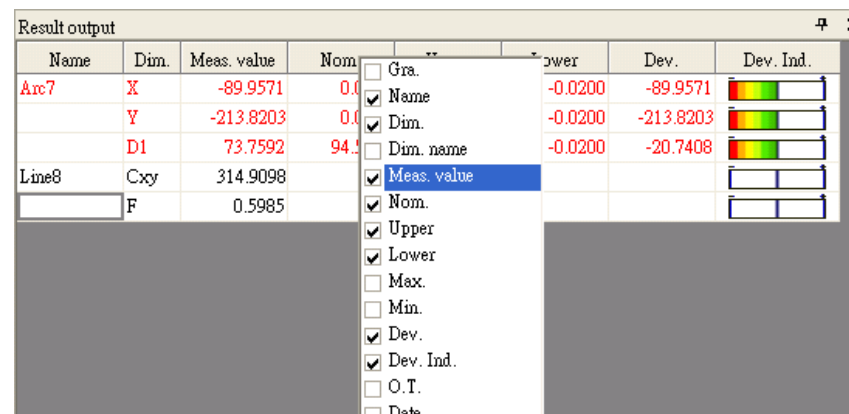
● A whole set of measure result output item, user can set what item to show on report

The measure result outputs have two modes. Simplify and detail information mode. Every mode user can select what item to show.

Simplify information: Display feature graph.  
name, dimensions character, dimension  
name and measure value.



Detail information mode: Include simplify  
information data, tolerance, deviation,  
and time.....etc.



- Measure result directly link to MicroSoft Excle file

If your inspection sheet is Excel file. You can get an inspection sheet immedtly. You just need to

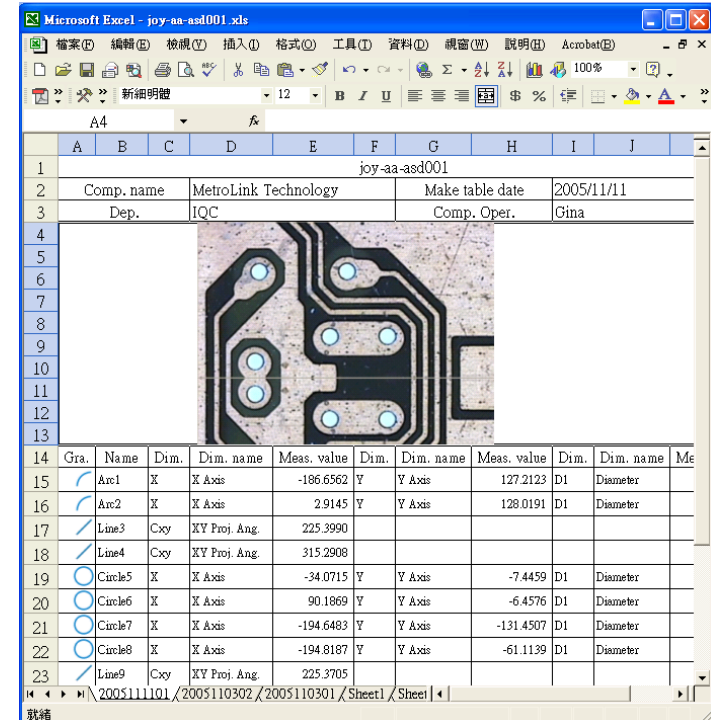
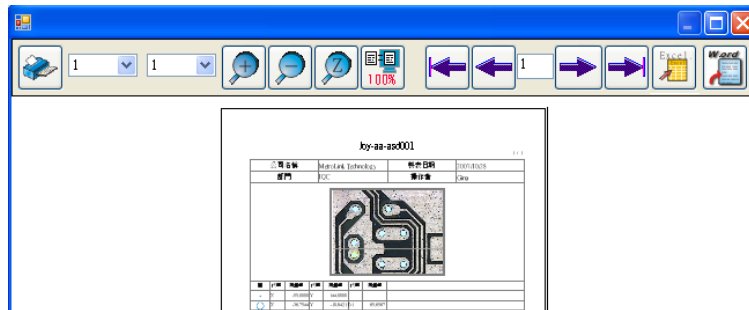
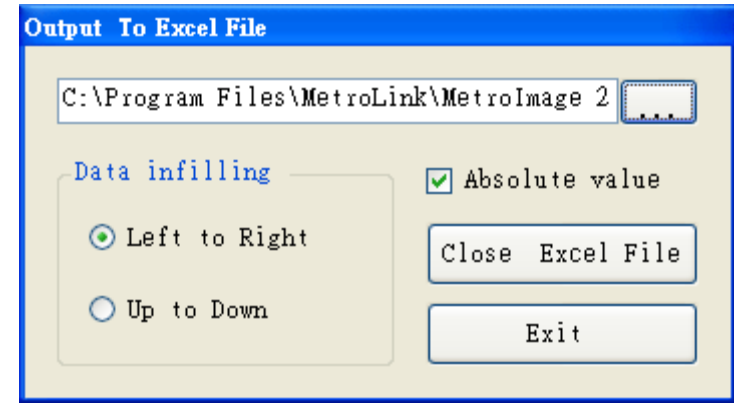
assign the Excel file path, infilling range and sequence before to measure.

- Measure result save as Excel or Word file

Except link to Excel file. The measure result also can directly save as Excel

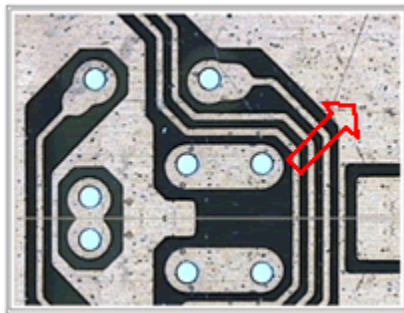
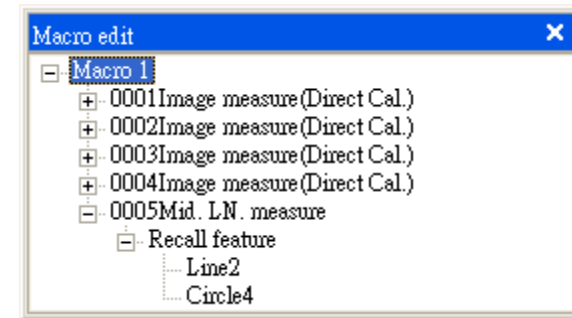
and Word file. You can click [Print] command then assign inspection title. You can

print out data or save as Excel or word file.



- Automatic recording your operate process to be a measure macro. And easy to creative user defined icon.

- You just need to open [Macro edit] function windows and click [Macro record] command then it will automatic recording user operation process to be a measuring macro. You can immediate to ecxute or save it..

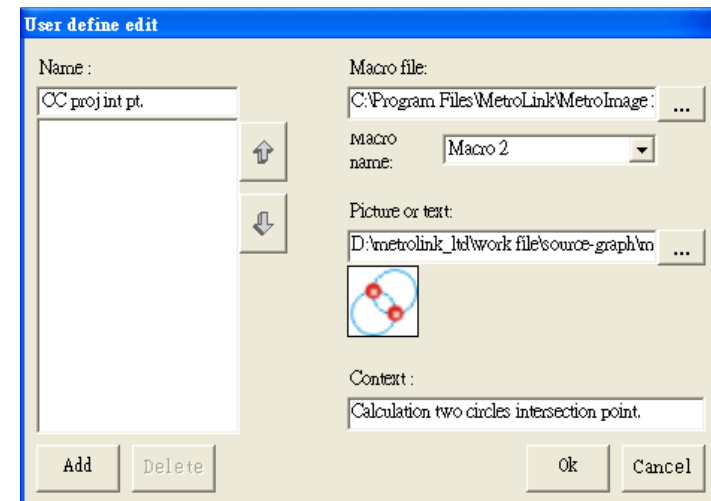
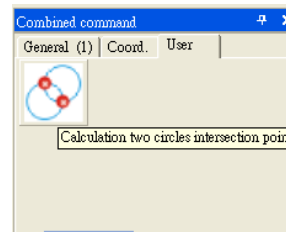


Manual type can generate measure position direction indicator. User can move stage by the indicator

If measure positions are in, it will automatic draw the detected region.

- The measure macro can easy to become a measure icon. Open [Combined command]

function windows you can easy to established a icon at user define frame



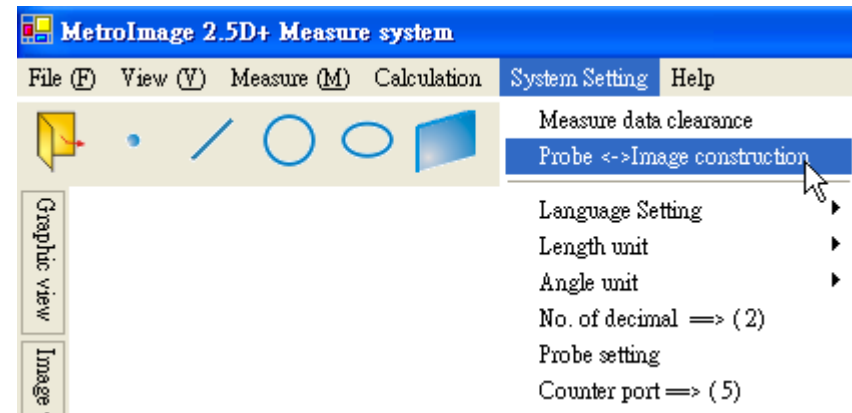
● Double probe system(option)

- Except vision measuring system we additional touch-trigger probe measuring function.

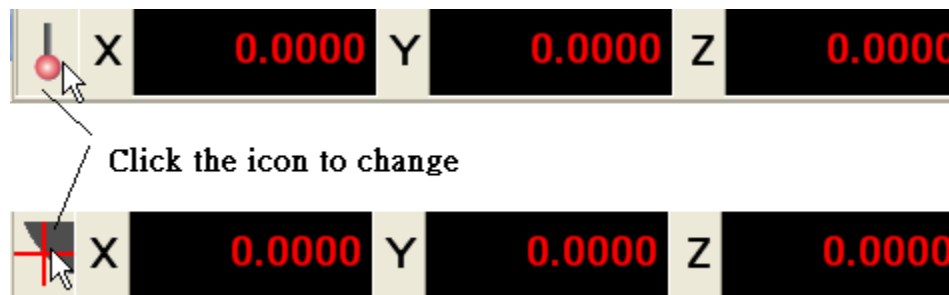
You can used [Probe <-> Image construction] command to calibration

lens and touch probe relative position. When you finish this process, you

can free to choose used lens or touch probe to to measured it.



Click vision probe icon or touch-trigger probe to change different probe measured system.



● Online statistical data collect and statistical chart (option)

- Convenient and rapid online collect data function. You just need to active [Collect data] function windows and add new statistical item, then measure data will automatic infilling database to draw a statistical diagram include Xbar-R、Xbar-S and Histogram.

The statistical diagram can be direct to print or save as Excel file.

