

R&R modular fixtures

component catalog



The R&R Solution. **Everything to Hold Anything.**
YOUR SINGLE SOURCE FOR CMM & VISION FIXTURING

Contents

magnets	1
clamps	2
suction cups	6
standoffs	8
adjustables	10
miscellaneous	12
setup examples	15
towers	16
XTensions	17

Always Innovating

At R&R Sales and Engineering, we are always striving to have the best available products – through innovation and reduced cost. We continue to engineer new and innovative components that make fixturing as simple as possible. Visit our web site for new product offerings.

PRICING

Refer to the separate price list by part number for pricing. Prices are subject to change without notice.

Everything to Hold Anything

MODULAR FIXTURING COMPONENTS

R&R has a wide selection of fixturing components available to make fixturing quicker and easier than ever. No matter what size, shape or type of material you have, our CMM and vision components can help you quickly fixture anything – increasing the productivity of your inspection equipment. The more components you have, the more modular our fixturing becomes. No more searching everywhere for the right way to hold your parts – big or small, our components can hold it all. R&R is your single source for all your fixturing component needs.

THREAD SIZES

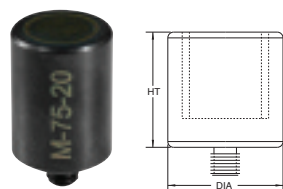
Components offered in English and metric:

- 1/4-20
- M8 (ideal for larger, robust parts)
- M4 (ideal for small, intricate parts)



the right components + the right price = the right fixture

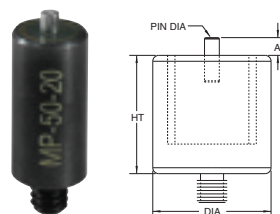
magnet
for holding steel
or iron parts



M-75-20

PART #	THREAD	DIA	HT
M-50-20	1/4-20	.50"	1.0"
M-75-20	1/4-20	.75"	1.0"
M-1-20	1/4-20	1.0"	1.0"
M-125-20	1/4-20	1.25"	1.0"
M-13-8	M8	13mm	25mm
M-19-8	M8	19mm	25mm
M-25-8	M8	25mm	25mm
M-32-8	M8	32mm	25mm
M-6-4	M4	6mm	25mm
M-13-4	M4	13mm	25mm

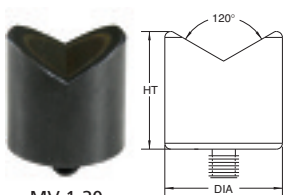
pin magnet
for holding and
locating steel or
iron parts



MP-50-20

PART #	THREAD	DIA	HT	PIN DIA	A
MP-50-20	1/4-20	.50"	1.0"	.125"	.150"
MP-75-20	1/4-20	.75"	1.0"	.125"	.150"
MP-1-20	1/4-20	1.0"	1.0"	.125"	.150"
MP-13-8	M8	13mm	25mm	3mm	3.8mm
MP-19-8	M8	19mm	25mm	3mm	3.8mm
MP-25-8	M8	25mm	25mm	3mm	3.8mm
MP-6-4	M4	6mm	25mm	1.6mm	3.8mm

v magnet
for cylindrical and
bent tubing



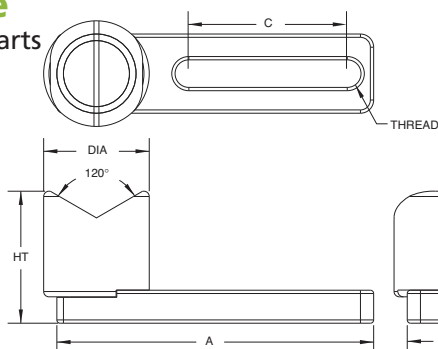
MV-1-20

PART #	THREAD	DIA	HT
MV-50-20	1/4-20	.50"	1.0"
MV-75-20	1/4-20	.75"	1.0"
MV-1-20	1/4-20	1.0"	1.0"
MV-125-20	1/4-20	1.25"	1.0"
MV-13-8	M8	13mm	25mm
MV-19-8	M8	19mm	25mm
MV-25-8	M8	25mm	25mm
MV-32-8	M8	32mm	25mm

v magnet with base
for holding round and shaft parts



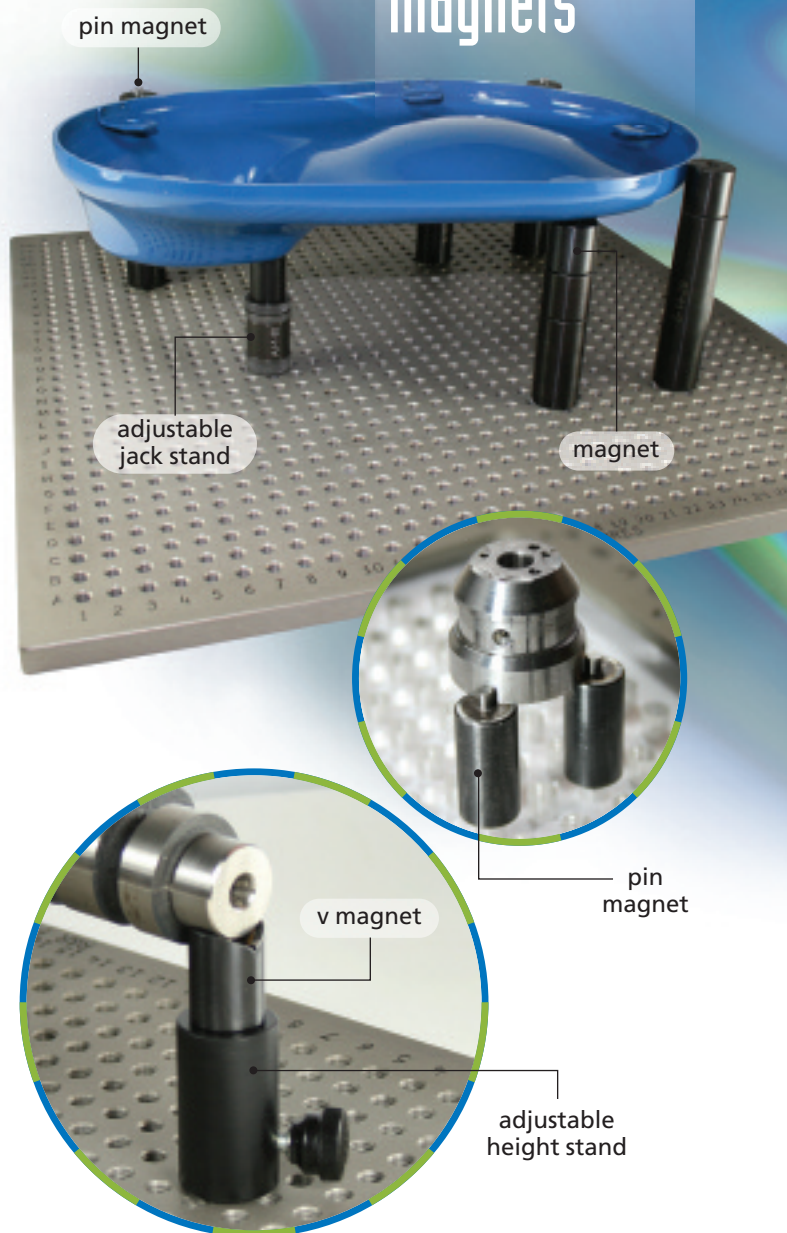
MVB-1-20



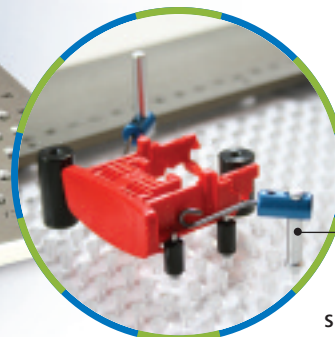
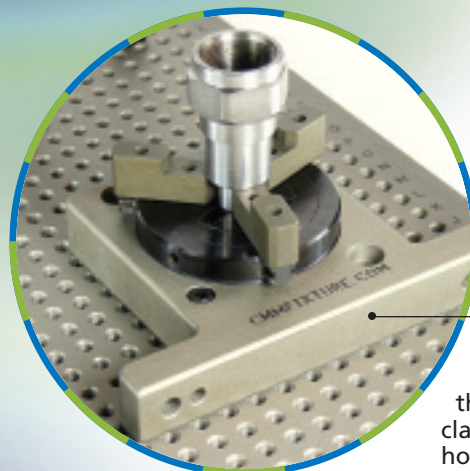
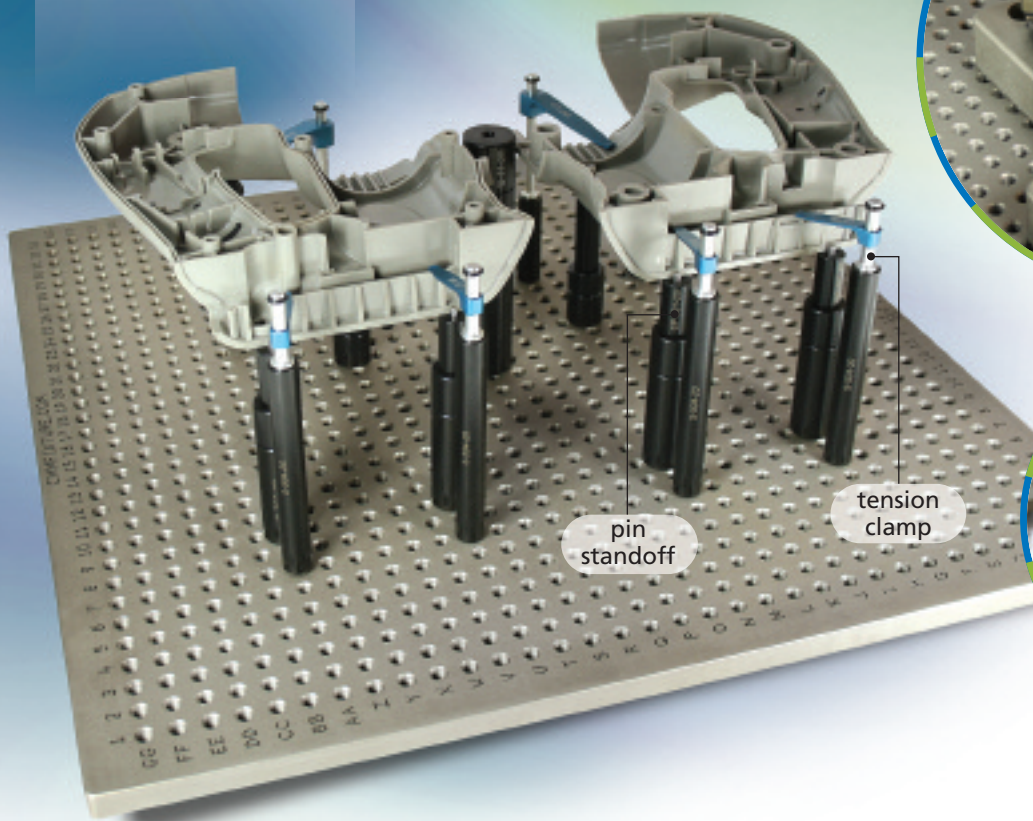
PART #	THREAD	DIA	HT	A	B	C
MVB-50-20	1/4-20	.50"	1.25"	3.0"	.75"	1.5"
MVB-75-20	1/4-20	.75"	1.25"	3.0"	.75"	1.5"
MVB-1-20	1/4-20	1.0"	1.25"	3.0"	.75"	1.5"
MVB-125-20	1/4-20	1.25"	1.25"	3.0"	.75"	1.5"
MVB-13-8	M8	13mm	32mm	76mm	19mm	38mm
MVB-19-8	M8	19mm	32mm	76mm	19mm	38mm
MVB-25-8	M8	25mm	32mm	76mm	19mm	38mm
MVB-32-8	M8	32mm	32mm	76mm	19mm	38mm

Included: sockethead cap, thumb screws and washers

magnets



clamps



tension clamp

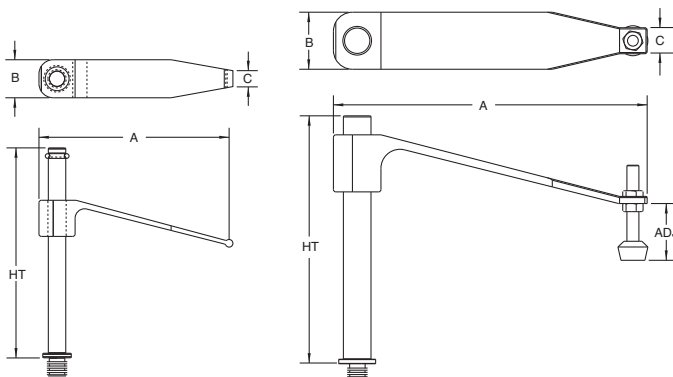
for quick and easy clamping



PART #	THREAD	HT	A	B	C
CT-160-125-20	1/4-20	1.25"	1.6"	.30"	.162"
CT-160-275-20	1/4-20	2.75"	1.6"	.30"	.162"
CT-250-275-20	1/4-20	2.75"	2.5"	.50"	.21"
CT-375-325-20	1/4-20	3.25"	3.75"	.75"	.35"
CT-4P-325-20 *	1/4-20	3.25"	4.125"	.75"	.35"
CT-40-30-8	M8	30mm	40mm	7.5mm	4mm
CT-40-70-8	M8	68mm	40mm	7.5mm	4mm
CT-64-70-8	M8	68mm	63.5mm	13mm	5mm
CT-95-83-8	M8	83mm	95mm	19mm	9mm
CT-100P-83-8 *	M8	83mm	105mm	19mm	9mm
CT-40-25-4	M4	25mm	40mm	7.5mm	4mm

*includes a plunger for reaching over the edge of a part to a more rigid surface or to reach over another support component.

Part number on tension clamp is reference only. See chart for complete dimensions.

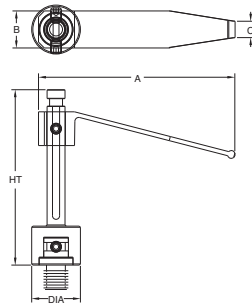


positional tension clamp

allows locking the tension clamp rotational position to avoid probing interferences from one time to the next



CPT-250-225-20

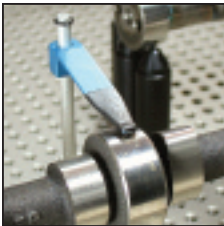


PART #	THREAD	HT	A	B	C
CPT-250-225-20	1/4-20	2.25"	2.5"	.50"	.21"
CPT-64-58-8	M8	58mm	63.5mm	13mm	5mm

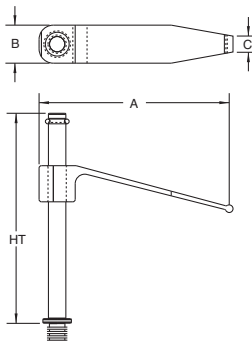
Part number on positional tension clamp is reference only. See chart for complete dimensions.

soft tip tension clamp

with rubber coated tips used for holding parts without scratching or marring the surface of a part



CTT-250-275-20



PART #	THREAD	HT	A	B	C
CTT-160-125-20	1/4-20	1.25	1.6"	.30"	.162"
CTT-160-275-20	1/4-20	2.75	1.6"	.30"	.162"
CTT-250-275-20	1/4-20	2.75	2.5"	.50"	.21"
CTT-375-325-20	1/4-20	3.25	3.75"	.75"	.35"
CTT-40-30-8	M8	30mm	40mm	7.5mm	4mm
CTT-40-70-8	M8	68mm	40mm	7.5mm	4mm
CTT-64-70-8	M8	68mm	63.5mm	13mm	5mm
CTT-95-83-8	M8	83mm	95mm	19mm	9mm
CTT-40-25-4	M4	21mm	40mm	7.5mm	4mm

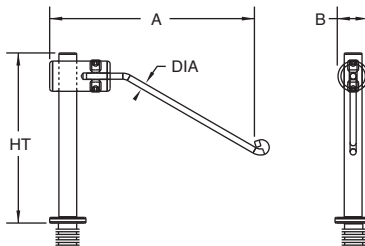
Part number on soft tip tension clamp is reference only. See chart for complete dimensions.

spring wire clamp

for light clamping of small parts minimizing the contact area on a part and for least possible obstruction on vision machines



CW-50-50-4



PART #	THREAD	HT	A	B	DIA
CW-1-1-20	1/4-20	1.0"	1.6"	.313"	.06"
CW-2-2-20	1/4-20	1.76"	2.4"	.313"	.06"
CW-25-25-4	M4	25mm	40mm	8mm	1.5mm
CW-50-50-4	M4	50mm	63mm	8mm	1.5mm

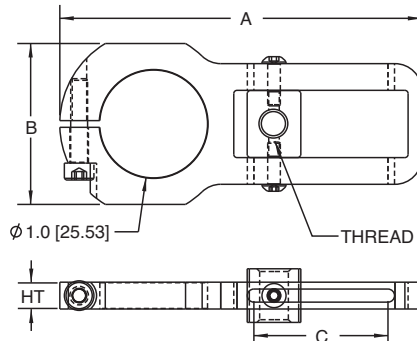
Part number on spring wire clamp is reference only. See chart for complete dimensions.

tension clamp bracket

to hold a tension clamp on an angle



CTB-1-20



PART #	THREAD	HT	A	B	C
CTB-1-20	1/4-20	.25"	3.38"	1.5"	1.0"
CTB-25-8	M8	6mm	85mm	38mm	25mm

hold down clamp

for more clamping force



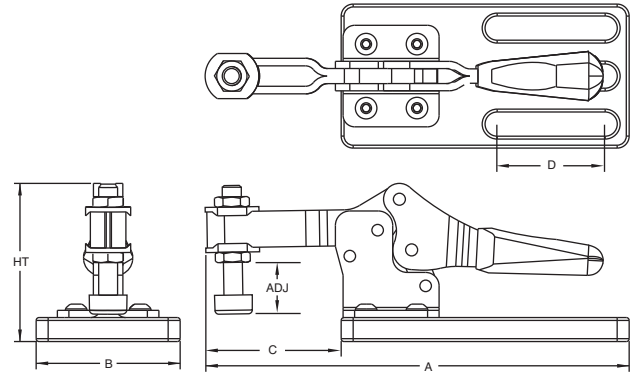
CH-525-20



CH-350-20

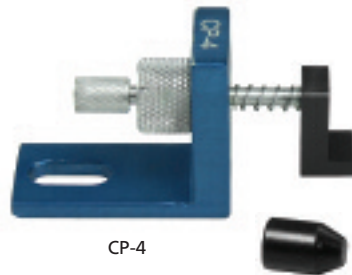
PART #	THREAD	HT	A	B	C	D	ADJ
CH-350-20	1/4-20	1.5"	5.0"	1.5"	1.40"	1.125"	.50"
CH-525-20	1/4-20	2.0"	5.5"	1.5"	2.0"	1.125"	.312"
CH-89-8	M8	38mm	127mm	38mm	35mm	30mm	12mm
CH-133-8	M8	50mm	140mm	38mm	50mm	30mm	8mm

Included: sockethead cap, screws and washers



pusher clamp

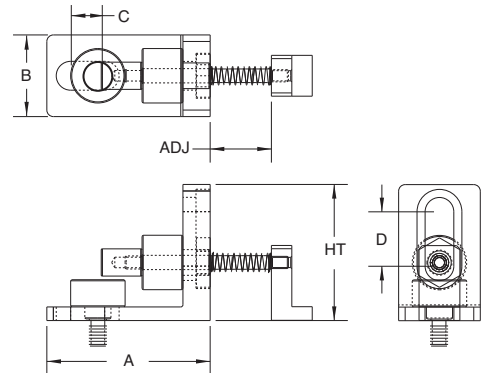
to push a part against standoffs or into corner.
Two interchangeable tips are included.



CP-4

PART #	THREAD	HT	A	B	C	D	ADJ
CP-20	1/4-20	1.25"	1.5"	.75"	.313"	.50"	.38"
CP-4	M4	32mm	38mm	19mm	8mm	12mm	9mm

Included: sockethead cap, screw and washer



screw pusher clamp

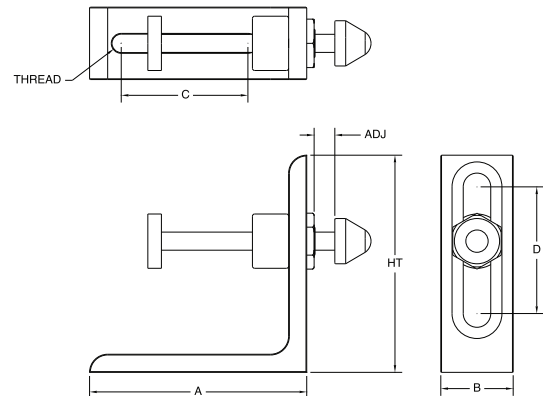
for pushing and holding a part against stops by way of screwing thumbscrew in and out to release pressure on part.



CSP-20

PART #	THREAD	HT	A	B	C	D	ADJ
CSP-20	1/4-20	3.0"	3.0"	1"	1.75"	1.75"	1.5"
CSP-8	M8	76mm	76mm	25mm	45mm	45mm	38mm

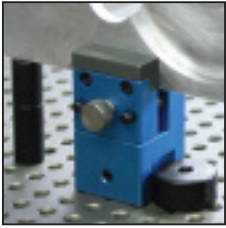
Included: sockethead cap, thumb screw and washers



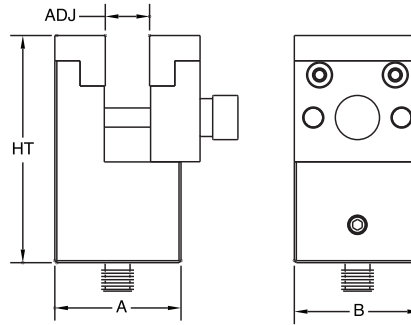
mini vise

for clamping a small area of a part. Vise can be rotated 360° and then locked into position.

PART #	THREAD	HT	A	B	ADJ
CMV-20	1/4-20	2.25"	1.25"	1.25"	.437"
CMV-8	M8	58mm	32mm	32mm	11mm



CMV-8



3-jaw clamp

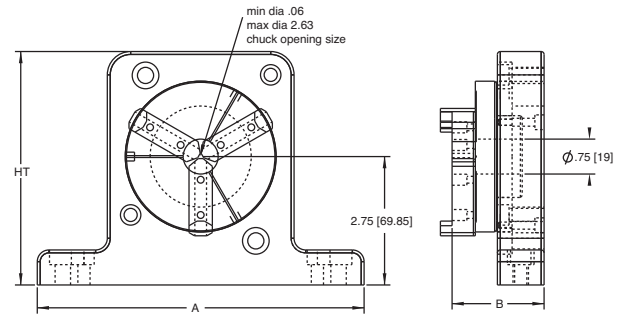
for holding round parts at one end or in the middle, allowing the probe to measure or scan completely around the part without interference. The 3-jaw clamp can be mounted to a base plate in a vertical or horizontal position. The standard aluminum jaws allow parts to be clamped on outside or inside diameters ranging from .06" (1.5mm) to 2.63" (66mm). Optional Delrin jaws are available for non-marring clamping.

PART #	THREAD	HT	A	B	ADJ
CJ-3-20	1/4-20	5.0"	7.0"	2.0"	.06-2.63"
CJ-3-8	M8	127mm	178mm	50mm	1.5-66mm

Included: sockethead cap screws



CJ-3-20



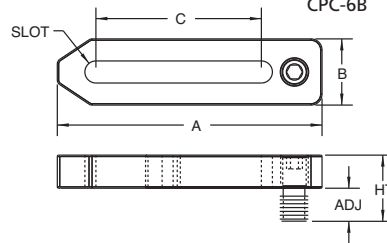
CMM plate clamp

Non-marring setup clamp for securing fixture bases to a CMM. Please specify desired bolt thread: 1/4-20, M6, M8, M10, or M12.

PART #	SLOT	HT	A	B	C	ADJ
CPC-4A	1/4-20, M6, M8	2.0"	4.0"	1.5"	2.0"	.875"
CPC-6A	1/4-20, M6, M8	2.0"	6.0"	1.5"	3.75"	.875"
CPC-4B	M10, M12	2.0"	4.0"	1.5"	2.0"	.875"
CPC-6B	M10, M12	2.0"	6.0"	1.5"	3.75"	.875"

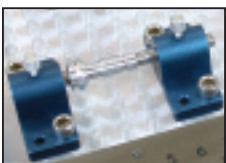


CPC-6A

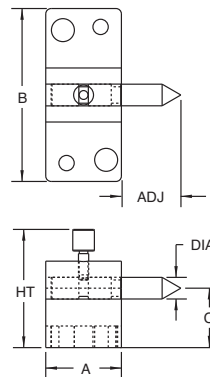


centers

for holding cylindrical parts at each end on their inside diameters. These are ideal for vision machine applications to allow complete visibility of the part.



CC-25-20



PART #	THREAD	DIA	HT	A	B	C	ADJ
CC-25-20	1/4-20	.25"	1.375"	.875"	2.0"	.687"	.625"
CC-50-20	1/4-20	.50"	1.825"	1.5"	2.5"	1"	1.5"
CC-1-20	1/4-20	1.0"	2.5"	2.0"	3.0"	1.5"	2.0"
CC-6-8	M8	6mm	35mm	22mm	50mm	18mm	16mm
CC-13-8	M8	13mm	46mm	38mm	64mm	25mm	38mm
CC-25-8	M8	25mm	64mm	50mm	75mm	38mm	50mm
CC-6-4	M4	6mm	35mm	22mm	50mm	18mm	16mm
CC-13-4	M4	13mm	46mm	38mm	64mm	25mm	38mm
CC-25-4	M4	25mm	64mm	50mm	75mm	38mm	50mm

Included: sockethead cap screws

suction cups

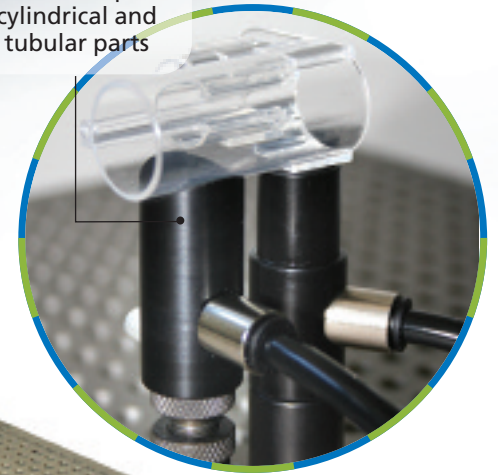
tower block and suction cup for added stability

adjustable pivot joint and exposed suction cup to conform to contour

adjustable jack stand and cone

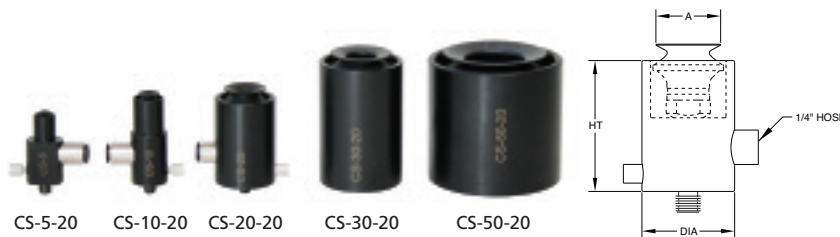
6-port manifold

v suction cup for cylindrical and tubular parts



suction cup

for holding plastic, glass, styrofoam and nonferrous parts



PART #	THREAD	DIA	HT	A
CS-5-20	1/4-20	0.75"	1.38"	5mm
CS-10-20	1/4-20	0.75"	1.75"	10mm
CS-20-20	1/4-20	1.25"	1.75"	20mm
CS-30-20	1/4-20	1.75"	2.5"	30mm
CS-50-20	1/4-20	2.75"	2.5"	50mm
CS-10-8	M8	19mm	45mm	10mm
CS-20-8	M8	32mm	45mm	20mm
CS-30-8	M8	43mm	64mm	30mm
CS-50-8	M8	70mm	64mm	50mm
CS-5-4	M4	19mm	35mm	5mm
CS-10-4	M4	19mm	45mm	10mm
CS-20-4	M4	32mm	45mm	20mm

exposed suction cup

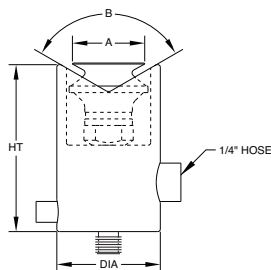
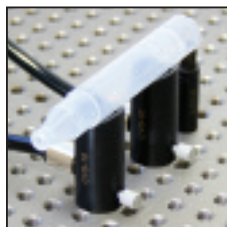
for holding contour surfaces



PART #	THREAD	DIA	HT	A
CES-10-20	1/4-20	.75"	1.64"	10mm
CES-20-20	1/4-20	1.25"	1.98"	20mm
CES-30-20	1/4-20	1.25"	2.27"	30mm
CES-50-20	1/4-20	1.25"	2.62"	50mm
CES-10-8	M8	19mm	42mm	10mm
CES-20-8	M8	32mm	50mm	20mm
CES-30-8	M8	32mm	58mm	30mm
CES-50-8	M8	32mm	66mm	50mm

v suction cup

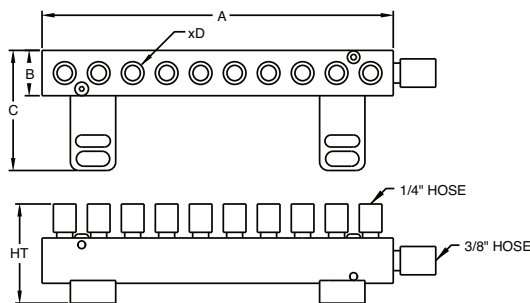
for holding cylindrical tubes and shafts



PART #	THREAD	DIA	HT	A	B
CVS-5-20	1/4-20	0.75"	1.5"	5mm	90°
CVS-10-20	1/4-20	0.75"	1.62"	10mm	120°
CVS-20-20	1/4-20	1.25"	2.0"	20mm	120°
CVS-30-20	1/4-20	1.75"	3.0"	30mm	120°
CVS-10-8	M8	19mm	42mm	10mm	120°
CVS-20-8	M8	32mm	50mm	20mm	120°
CVS-30-8	M8	43mm	76mm	30mm	120°
CVS-5-4	M4	19mm	37mm	5mm	90°
CVS-10-4	M4	19mm	42mm	10mm	120°
CVS-20-4	M4	32mm	50mm	20mm	120°

manifold

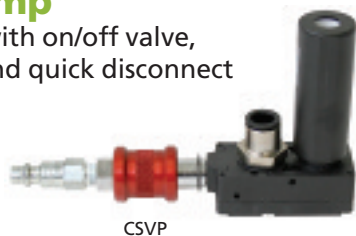
6- or 10-port manifold can be used vertically or horizontally on base plate



PART #	DESCRIPTION	HT	A	B	C	D
CSM-6P	6-port manifold	2.18"	4.75"	1.0"	2.65"	6
CSM-10P	10-port manifold	2.18"	7.75"	1.0"	2.65"	10

vacuum pump

for suction cups with on/off valve, hose connector and quick disconnect



PART #	DESCRIPTION
CSVP	vacuum pump assembly

vacuum hose

ordered by the inch



PART #	DESCRIPTION
CSH-MP	3/8" dia. hose to connect manifold to vacuum pump (sold per inch)
CSH-MSC	1/4" dia. hose to connect manifold to suction cups (sold per inch)

suction cup tray

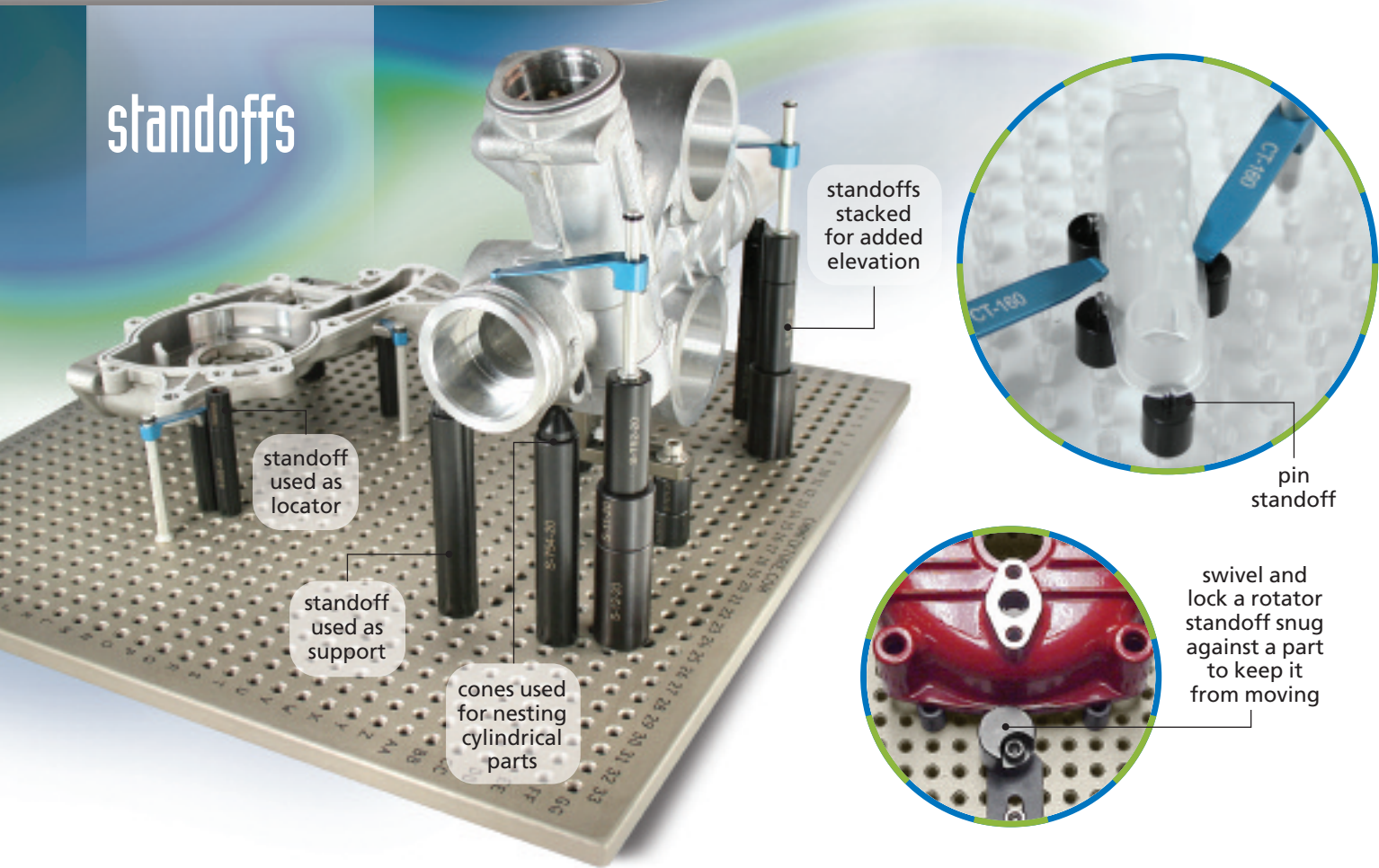
for holding and organizing 1/4-20 or M8 suction cups



PART #	THREAD	HT	A	B
TCS-128	1/4-20 / M8	1	12	8

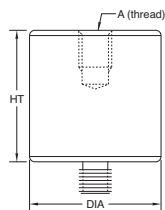
- COMPONENT TRAY HOLDS:**
- (6) 5mm or 10mm suction cups
 - (9) 20mm suction cups
 - (4) 30mm or 50mm suction cups
 - (1) pocket for holding various hardware and component

standoffs



standoff

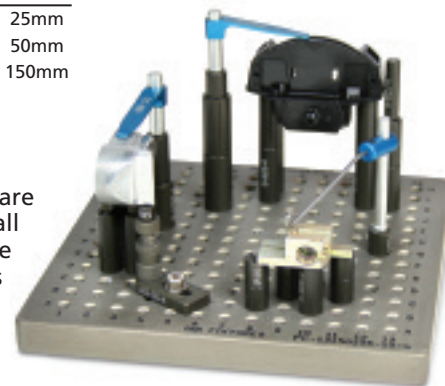
to elevate and locate a part



* = does not have a threaded top.
M4 standoffs are made of aluminum.
1/4-20 and M8 standoffs are made of steel.

PART #	THREAD	DIA	HT	PART #	THREAD	DIA	HT	PART #	THREAD	DIA	HT
1/4-20 STANDOFFS				M8 STANDOFFS				M4 STANDOFFS			
S-2550-20 *	1/4-20	.25"	.50"	S-1315-8	M8	13mm	15mm	S-65-4 *	M4	6mm	5mm
S-251-20 *	1/4-20	.25"	1.0"	S-1320-8	M8	13mm	20mm	S-610-4 *	M4	6mm	10mm
S-37525-20 *	1/4-20	.375"	.25"	S-1325-8	M8	13mm	25mm	S-620-4 *	M4	6mm	20mm
S-37550-20	1/4-20	.375"	.50"	S-1350-8	M8	13mm	50mm	S-625-4 *	M4	6mm	25mm
S-37575-20	1/4-20	.375"	.75"	S-13100-8	M8	13mm	100mm	S-95-4 *	M4	9mm	5mm
S-3751-20	1/4-20	.375"	1.0"	S-1915-8	M8	19mm	15mm	S-910-4	M4	9mm	10mm
S-5050-20	1/4-20	.50"	.50"	S-1920-8	M8	19mm	20mm	S-920-4	M4	9mm	20mm
S-5075-20	1/4-20	.50"	.75"	S-1925-8	M8	19mm	25mm	S-925-4	M4	9mm	25mm
S-501-20	1/4-20	.50"	1.0"	S-1950-8	M8	19mm	50mm	S-1210-4	M4	12mm	10mm
S-502-20	1/4-20	.50"	2.0"	S-19100-8	M8	19mm	100mm	S-1220-4	M4	12mm	20mm
S-504-20	1/4-20	.50"	4.0"	S-19150-8	M8	19mm	150mm	S-1225-4	M4	12mm	25mm
S-506-20	1/4-20	.50"	6.0"	S-2520-8	M8	25mm	20mm				
S-7550-20	1/4-20	.75"	.50"	S-2525-8	M8	25mm	25mm				
S-7575-20	1/4-20	.75"	.75"	S-2550-8	M8	25mm	50mm				
S-751-20	1/4-20	.75"	1.0"	S-25100-8	M8	25mm	100mm				
S-752-20	1/4-20	.75"	2.0"	S-25150-8	M8	25mm	150mm				
S-754-20	1/4-20	.75"	4.0"	S-3825-8	M8	38mm	25mm				
S-756-20	1/4-20	.75"	6.0"	S-3850-8	M8	38mm	50mm				
S-150-20	1/4-20	1.0"	.50"	S-38150-8	M8	38mm	150mm				
S-175-20	1/4-20	1.0"	.75"								
S-11-20	1/4-20	1.0"	1.0"								
S-12-20	1/4-20	1.0"	2.0"								
S-14-20	1/4-20	1.0"	4.0"								
S-16-20	1/4-20	1.0"	6.0"								
S-1501-20	1/4-20	1.50"	1.0"								
S-1502-20	1/4-20	1.50"	2.0"								
S-1506-20	1/4-20	1.50"	6.0"								

M4 standoffs are ideal for small and intricate part setups



pin standoff

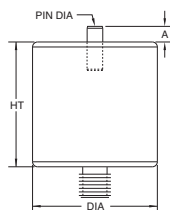
to elevate and locate a part against the pin



SP-501-20



SP-910-4



PART #	THREAD	DIA	HT	A	PIN DIA
SP-2550-20	1/4-20	.25"	.50"	.15"	.06"
SP-37550-20	1/4-20	.375"	.50"	.15"	.06"
SP-501-20	1/4-20	.50"	1.0"	.15"	.125"
SP-751-20	1/4-20	.75"	1.0"	.15"	.125"
SP-1325-8	M8	13mm	25mm	4mm	3mm
SP-610-4	M4	6mm	10mm	2.5mm	2mm
SP-910-4	M4	9mm	10mm	2.5mm	2mm
SP-1210-4	M4	12mm	10mm	2.5mm	2mm

2-way & 4-way spring-loaded pin standoff

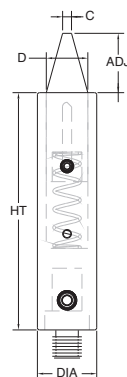
for locating within a hole or slot of a part for quick location or for setting to the datums



S-12-2W-20



S-12-4W-20



PART #	THREAD	DIA	HT	C	D	ADJ
2-WAY PINS						
S-502-2W-20	1/4-20	.50"	2.0"	.08"	.35"	.50"
S-12-2W-20	1/4-20	1.0"	2.0"	.28"	.75"	.50"
S-2550-2W-8	M8	25mm	50mm	7.1mm	19mm	12.5mm

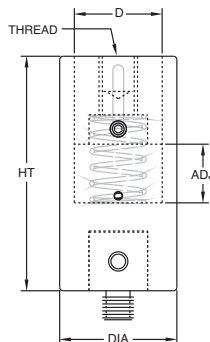
4-WAY PINS						
S-502-4W-20	1/4-20	.50"	2.0"	.08"	.35"	.50"
S-12-4W-20	1/4-20	1.0"	2.0"	.28"	.75"	.50"
S-2550-4W-8	M8	25mm	50mm	7.1mm	19mm	12.5mm

threaded spring post standoff

the 1/4-20 or M8 female thread can be used to screw into the spring post



S-12-TP-20



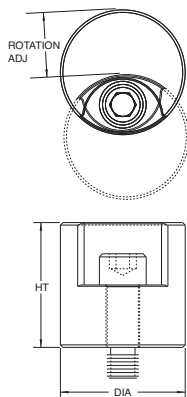
PART #	THREAD	DIA	HT	D	ADJ
S-12-TP-20	1/4-20	1.0"	2.0"	.75"	.38"
S-2550-TP-8	M8	25mm	50mm	19mm	9.5mm

rotator standoff

for pushing a part against its stops



SR-11-20



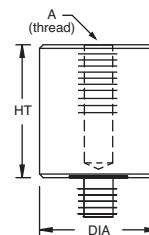
PART #	THREAD	DIA	HT	ADJ
SR-11-20	1/4-20	1.0"	1.0"	.75"

standoff adapter

for step clamps and calibration sphere



SA-14-8



PART #	THREAD	DIA	HT	A
SA-4-20	1/4-20	.375"	.50"	M4
SA-8-20	1/4-20	1.0"	1.0"	M8
SA-14-8	M8	25mm	25mm	1/4-20
SA-14-4	M4	19mm	15mm	1/4-20

adjustables

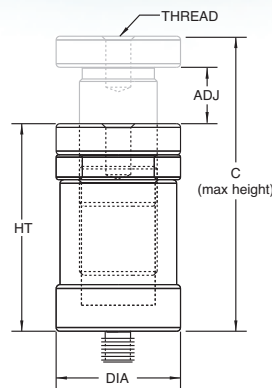


adjustable jack stand

to allow variable heights of up to .5" [13mm] and then lock into position



AJ-1-20



PART #	THREAD	DIA	HT	ADJ	C
AJ-50-20	1/4-20	.625"	1.61"	.5"	2.26"
AJ-1-20	1/4-20	1.0"	1.67"	.5"	2.26"
AJ-19-8	M8	19mm	37mm	13mm	57mm
AJ-25-8	M8	25mm	42mm	13mm	57mm
AJ-9-4	M4	9mm	19mm	7mm	23mm

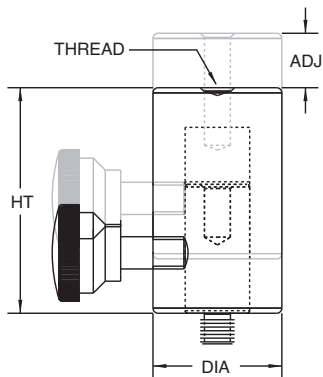
adjustable height stand

to allow variable heights without marring the part's surface

PART #	THREAD	DIA	HT	ADJ
AH-1175-20	1/4-20	1.0"	1.75"	.375"
AH-2545-8	M8	25mm	45mm	9mm



AH-1175-20



adjustable v-post

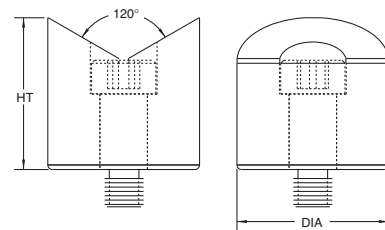
for holding cylindrical or tubular parts without marring the part's surface. Can be rotated and locked to any angle.

PART #	THREAD	DIA	HT
AVP-11-20	1/4-20	1.0"	1.0"
AVP-2525-8	M8	25mm	25mm

Included: shoulder bolt



AVP-11-20



adjustable slide

to place components in between holes on the plate

PART #	THREAD	HT	A	B	C
AS-3-20	1/4-20	.25"	3.0"	1.0"	1.75"
AS-1-20	1/4-20	.25"	1.38"	.63"	.75"
AS-70-8	M8	10mm	72mm	25mm	42mm
AS-30-4	M4	5mm	30mm	12mm	13mm

Included: sockethead cap and thumb screws

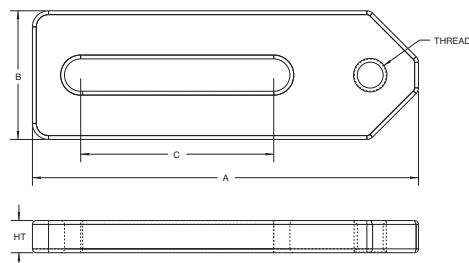


AS-30-4

AS-1-20

AS-3-20

AS-70-8



adjustable T-arm

to support a part on its side

PART #	THREAD	DIA	HT	A	B	ADJ
AT-20	1/4-20	.31"	2.0"	4.0"	.50"	3.5"

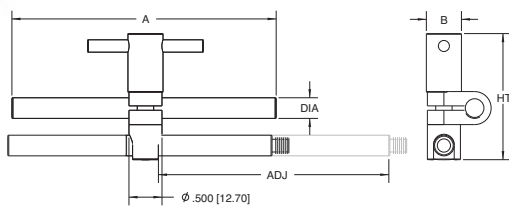
adjustable pivot joint

for positioning a component at any angle. Lock the rotating base into position and then set the angle of the pivot.

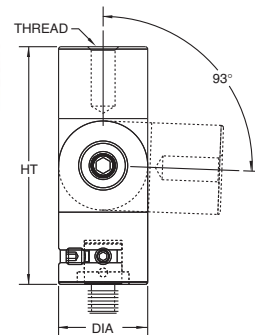
PART #	THREAD	DIA	HT
APJ-20	1/4-20	.75"	2.0"
APJ-8	M8	19mm	50mm



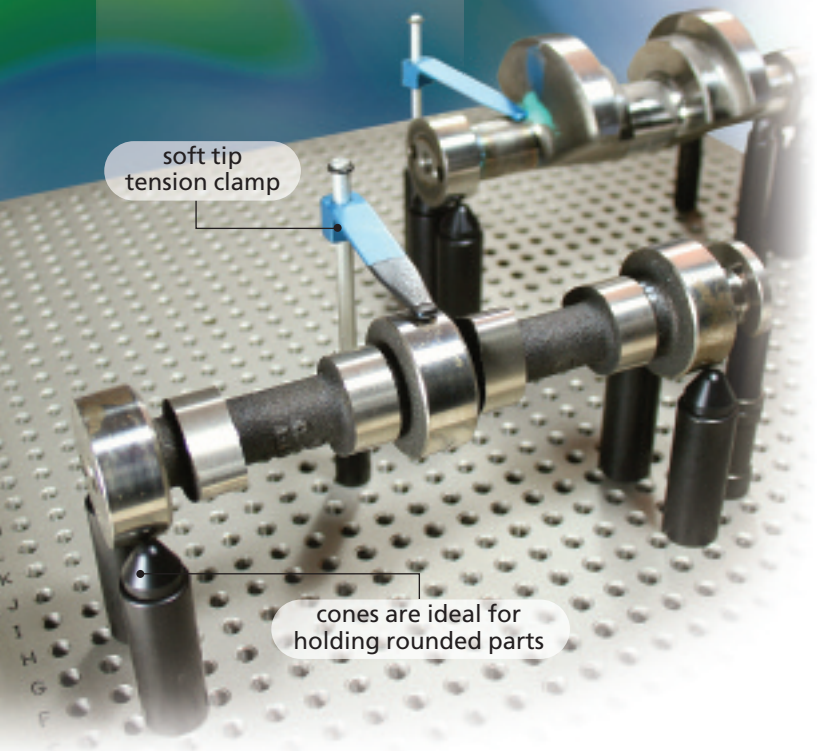
AT-20



APJ-20



miscellaneous



soft tip tension clamp

cones are ideal for holding rounded parts

cones
to rest a part on a rounded point

PART #	THREAD	DIA	HT	MATERIAL
RCD-20	1/4-20	.625"	.50"	Delrin
RCS-20	1/4-20	.625"	.50"	steel
RCA-20	1/4-20	1.0"	.75"	aluminum
RCD-8	M8	16mm	13mm	Delrin
RCS-8	M8	16mm	13mm	steel
RCA-8	M8	25mm	19mm	aluminum

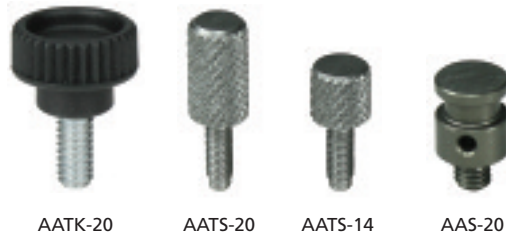


resting pin
to rest a part on a rounded point

PART #	THREAD	DIA	HT	MATERIAL
RPS-20	1/4-20	.375"	.375"	steel
RPA-4	M4	6mm	5mm	aluminum



screws & adapters
component replacement parts



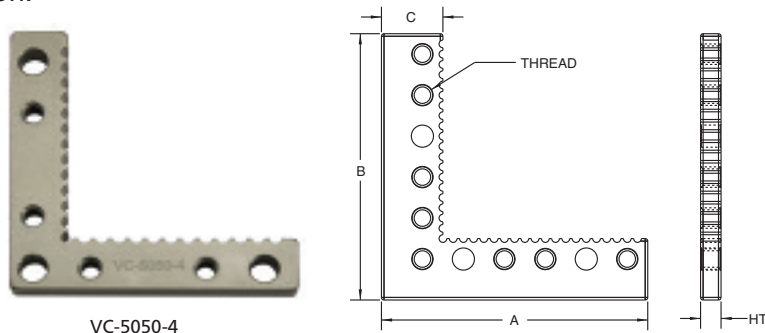
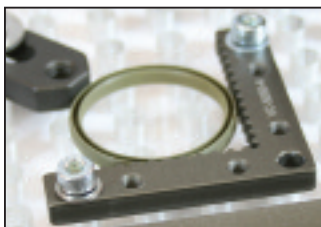
PART #	THREAD	DIA	HT	A
THUMB SCREW				
AATK-20	1/4-20	.83"	1.10"	.50"
SCREW				
AATS-14	M3	6mm	14mm	6mm
AATS-20	M3	6mm	20mm	11.5mm
ADAPTER				
AAS-20	1/4-20	.315"	.348"	
AAS-8	M8	8mm	9mm	
AAS-4	M4	8mm	9mm	

corner viewer

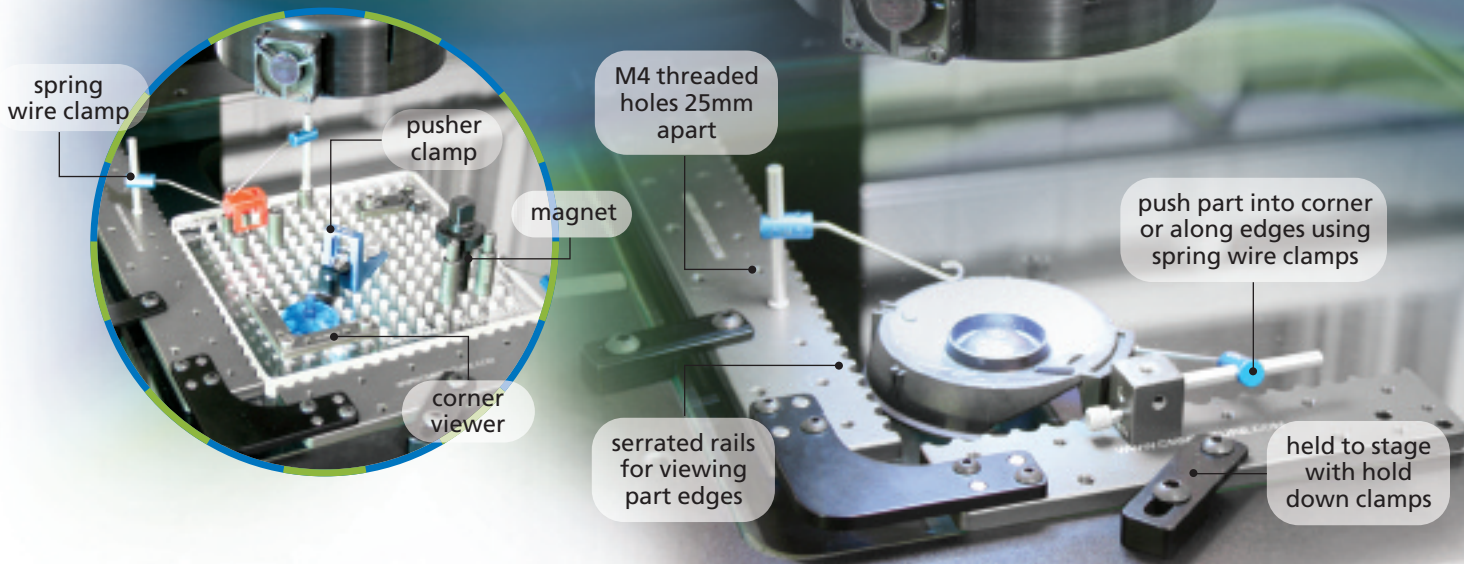
for allowing a part to be located in a corner. The serrations allow backlighting along the sides of the part so that measurements can be taken on a vision machine. There are two standard sizes available, but any custom size can be made for your application.

PART #	THREAD	HT	A	B	C
VC-33-20	1/4-20	.25"	3.25"	3.25"	.75"
VC-5050-4	M4	6mm	50mm	50mm	10mm

Included: sockethead cap screws

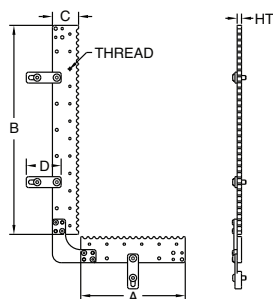


VC-5050-4



vision corner fixture

used on vision systems as a quick and economical way to hold and secure parts/fixtures to your vision stage



PART #	THREAD	HT	A	B	C	D
VCF-150150-4	M4	6mm	150mm	150mm	38mm	50mm
VCF-150300-4	M4	6mm	150mm	300mm	38mm	50mm
VCF-300300A-4	M4	6mm	300mm	300mm	38mm	50mm
VCF-300300B-4	M4	6mm	300mm	300mm	38mm	100mm
VCF-300450-4	M4	6mm	300mm	450mm	38mm	100mm
VCF-450450-4	M4	6mm	450mm	450mm	38mm	100mm

Included: 2 rails, corner connector, hold down clamps, and hardware

M4 vision corner fixture kits

A comprehensive kit for holding steel, aluminum, plastic, and other nonferrous parts.

PART #	DESCRIPTION	QUANTITIES PER KIT					
		1	2	3	4	5	6
VCF-CB	serrated rail corner connector	1	1	1	1	1	1
VCF-150-R	150mm vision corner serrated rail	2	1	-	-	-	-
VCF-300-R	300mm vision corner serrated rail	-	1	2	2	1	-
VCF-450-R	450mm vision corner serrated rail	-	-	-	-	1	2
VCF-C50	45mm vision corner hold down clamp	2	3	4	-	-	-
VCF-C100	90mm vision corner hold down clamp	-	-	-	4	4	4
CW-50-50-4	50mm spring wire clamp	3	3	4	4	5	6
S-TB-B-4	tower block	2	2	3	3	3	4

Kits to choose from...

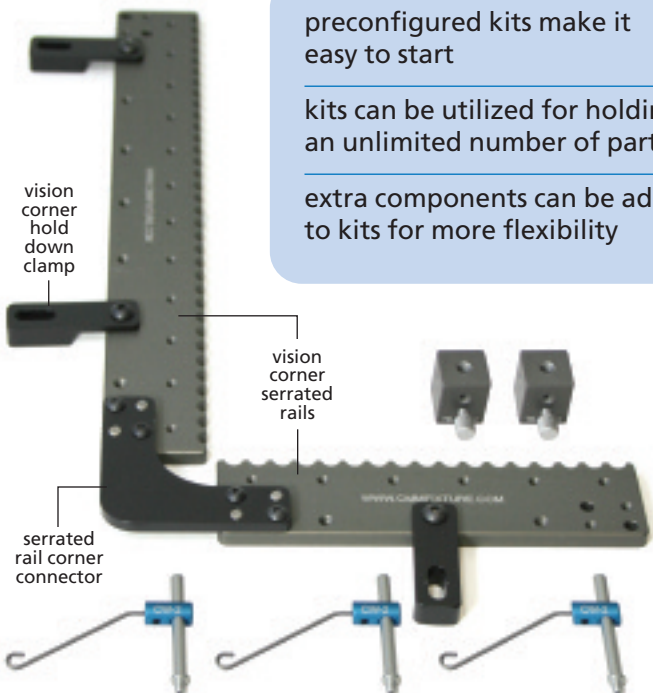


- All hardware including hold down clamps for securing corner fixture to stage is included in each kit.
- Kits can be modified to fit your application.

preconfigured kits make it easy to start

kits can be utilized for holding an unlimited number of parts

extra components can be added to kits for more flexibility



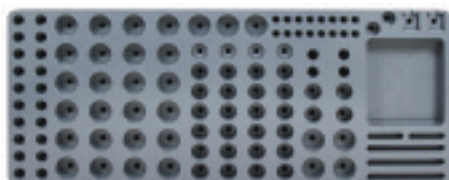
VCF-150300K-4

Keep yourself organized with our component trays. No more searching all over for your components. Our trays hold and organize all your components together in one spot saving setup time and increasing your productivity.



1/4-20 component tray

to hold and organize 1/4-20 components



TC-208-20

PART #	THREAD	HT	A	B
TC-208-20	1/4-20	1.0"	20.0"	8.0"

COMPONENT TRAY HOLDS:

- (2) 1.0" long adjustable slides
- (3) 3.0" long adjustable slides
- (2) tower blocks
- (2) .625" adjustable jack stands
- (3) 1.0" adjustable jack stands / components
- (16) .375" dia. components
- (24) .50" dia. components
- (32) .75" dia. components
- (28) 1.0" dia. components
- (1) pocket for various hardware and components

M8 component tray

to hold and organize M8 components



TC-500200-8

PART #	THREAD	HT	A	B
TC-500200-8	M8	25mm	500mm	200mm

COMPONENT TRAY HOLDS:

- (3) adjustable slides
- (2) tower blocks
- (2) 19mm adjustable jack stands
- (4) 25mm adjustable jack stands / components
- (24) 13mm dia. components
- (32) 19mm dia. components
- (28) 25mm dia. components
- (1) pocket for various hardware and components

M4 component tray

to hold and organize M4 components



TC-300190-4

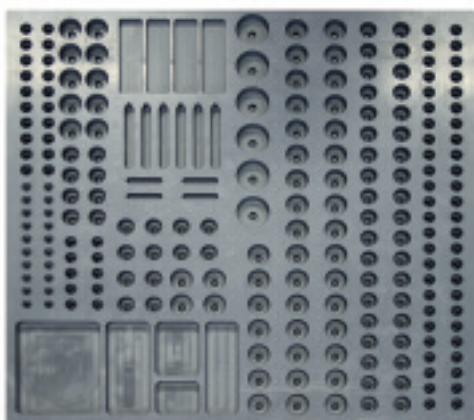
PART #	THREAD	HT	A	B
TC-300190-4	M4	25mm	300mm	190mm

COMPONENT TRAY HOLDS:

- (4) adjustable slides
- (1) pusher clamp
- (1) corner viewer
- (37) 6mm dia. components
- (36) 9mm dia. components
- (36) 12mm dia. components
- (1) pocket for various hardware and components

1/4-20 and M8 large component tray

to hold and organize 1/4-20 or M8 components



TC-2220

PART #	THREAD	HT	A	B
TC-2220	1/4-20 / M8	1.0"	21.5"	20.0"

COMPONENT TRAY HOLDS:

- (4) 1.0" adjustable slide
- (6) 3.0" / 70mm adjustable slide
- (4) tower blocks w/base / screw pusher
- (4) .625" / 19mm adjustable jack stands
- (4) 1.0" / 25mm adjustable jack stands / components
- (20) .375" dia. components
- (80) .50" / 13mm dia. components
- (54) .75" / 19mm dia. components
- (49) 1.0" / 25mm dia. components
- (6) 1.50" / 38mm dia. components
- (5) pockets for various hardware and components

utilize the same components and fixturing for creating an unlimited number of setups

perfect for both prototype and production part setups

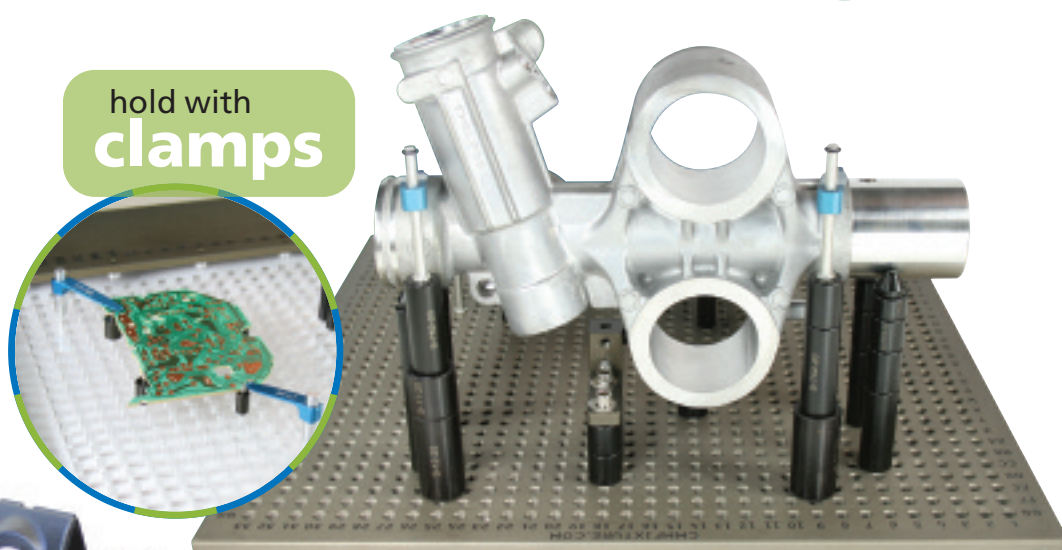
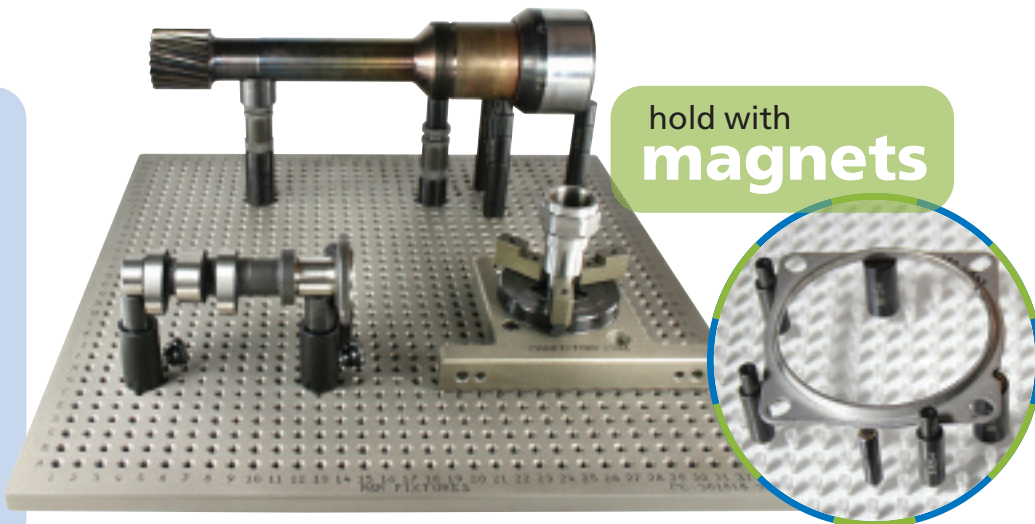
setup more than one part at a time

large variety of components continuously being added for even greater flexibility

increase accuracy by recording and error proofing setups easily with FixtureBuilder software

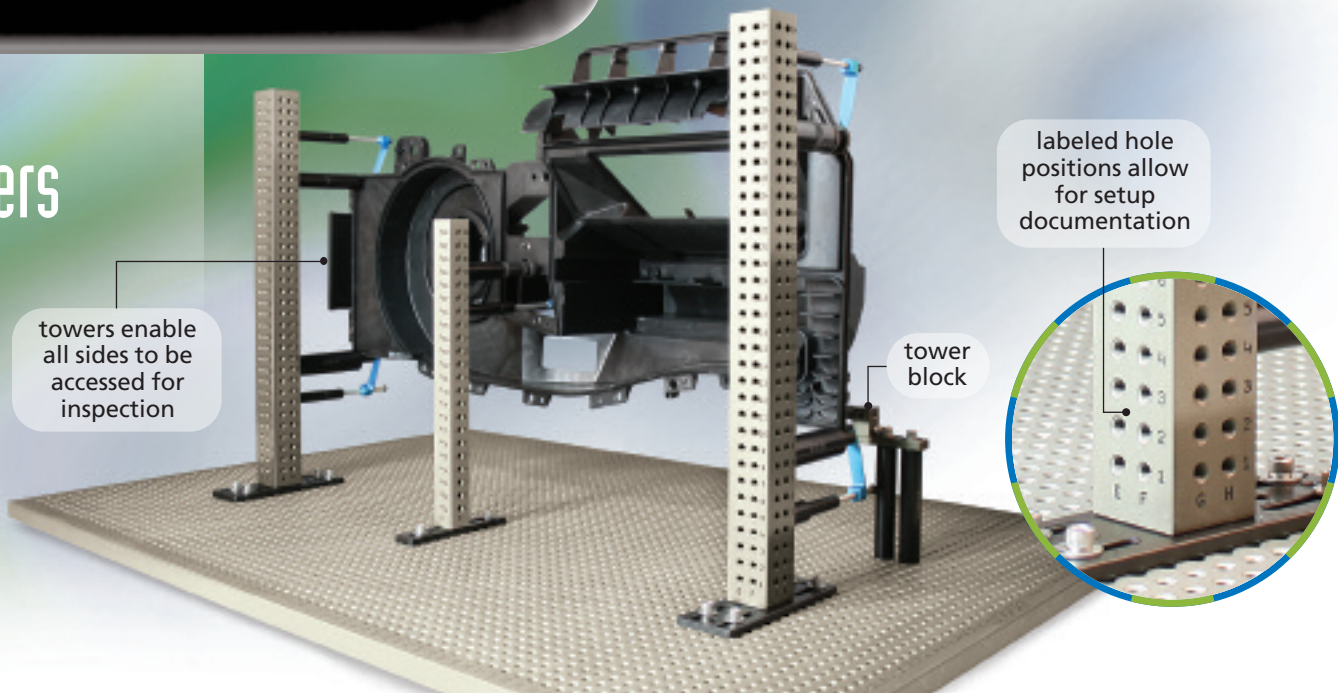
setups can be held vertically or horizontally on a fixture

base plates up to 60" x 120"



bottom line...
Everything to Hold Anything

towers



tower

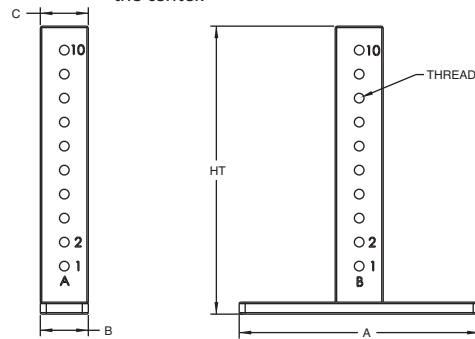
to hold a part vertically



PART #	THREAD	HT	A	B	C	THREADED ROWS
T-16-20	1/4-20	6.0"	5.0"	1.0"	1.0"	1
T-112-20	1/4-20	12.0"	5.0"	1.0"	1.0"	1
T-1512-20	1/4-20	12.0"	6.0"	2.0"	1.5"	2
T-1518-20	1/4-20	18.0"	6.0"	2.0"	1.5"	2
T-224-20	1/4-20	24.0"	6.0"	2.0"	2.0"	2
T-230-20	1/4-20	30.0"	6.0"	2.0"	2.0"	2
T-25150-8	M8	150mm	127mm	25mm	25mm	1
T-25300-8	M8	300mm	127mm	25mm	25mm	1
T-35300-8	M8	300mm	152mm	50mm	35mm	2 / 1 *
T-35450-8	M8	450mm	152mm	50mm	35mm	2 / 1 *
T-50600-8	M8	600mm	152mm	50mm	50mm	2
T-50750-8	M8	760mm	152mm	50mm	50mm	2

Included: sockethead cap screws

* Two sides have 2 rows of holes and the other two sides have 1 row of holes in the center.



tower block with base

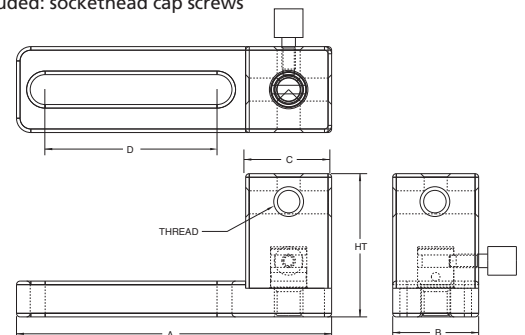
for positioning a component vertically to the part setup. There is one threaded hole on each side and one on the top. The block can be used without the base to allow full rotation.



TB-751-20

PART #	THREAD	HT	A	B	C	D
TB-751-20	1/4-20	1.25"	2.75"	.75"	.75"	1.5"
TB-2530-8	M8	40mm	89mm	25mm	25mm	45mm
TB-1619-4	M4	26mm	41mm	16mm	16mm	15mm

Included: sockethead cap screws



XTensions

XTensions come standard up to 60" in length. Custom lengths also available.

jack stand

XTensions are aluminum extrusions ideal for creating vertical setups that allow measurement of the entire part

magnet

slots allow for infinite positioning of components

tower

use grid plates to attach multiple R&R components in a small area

XTensions

for building a setup vertically or creating a support structure to fixture a part



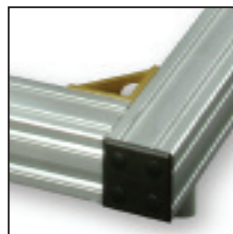
1"x 1"
for component placement and attaching to 2"x 2" XTension



1"x 2"
for component placement and cross member support



2"x 2"
for main vertical and cross member supports



3"x 3"
for creating a structure base or for very large parts in a vertical position

PART #	DIMENSIONS
XT1-3	1"x 1"x 3"
XT1-6	1"x 1"x 6"
XT1-12	1"x 1"x 12"
XT1-2-6	1"x 2"x 6"
XT1-2-12	1"x 2"x 12"
XT1-2-18	1"x 2"x 18"
XT1-2-24	1"x 2"x 24"
XT2-6	2"x 2"x 6"
XT2-12	2"x 2"x 12"
XT2-18	2"x 2"x 18"
XT2-24	2"x 2"x 24"
XT2-30	2"x 2"x 30"
XT2-36	2"x 2"x 36"
XT2-42	2"x 2"x 42"
XT2-48	2"x 2"x 48"
XT2-60	2"x 2"x 60"
XT3-24	3"x 3"x 24"
XT3-36	3"x 3"x 36"
XT3-48	3"x 3"x 48"
XT3-60	3"x 3"x 60"

economy T-nut

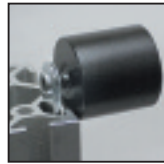
for fastening R&R components or XTension connectors

PART #	THREAD
XT-ET-Nut	1/4-20
XT-3ET-Nut	1/4-20

R&R component



1) lightly screw component onto the nut

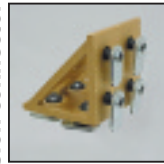


2) slide nut into slot of XTension



3) once component is in the desired position tighten completely

XTension connector



1) lightly secure all screws to the nuts



2) slide one side of the connector into slots of XTension (place onto horizontal XTensions first)



3) slide other side of the connector (and XTension if applies) to vertical XTension, tighten screws slightly



4) once connector (and horizontal XTension if applies) are in place tighten screws completely



pivot T-nut

for fastening R&R components or XTension connectors

PART #	THREAD
XT-PT-Nut	1/4-20

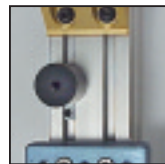
A pivot nut is used to add a component or connector between other components or XTensions.



1) rotate pivot nut into slot of XTension



2) use hex wrench to hold nut in slot (if vertical) then screw component into the nut



3) once component is in desired position tighten completely and then tighten set screw

A pivot nut is also used so that the component can be removed, if needed.



4) a removable label can be placed next to the nut for future reference



5) once the nut is secured into the XTension slot, the component can be removed

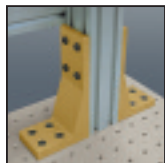
angle foot

for securing XTensions to R&R base plate

PART #	SCREW (L)
XT-2AF	5/8"
XT-2AF-M8*	M8

Included: economy T-nuts, button head cap screws, and socket head cap screws

*metric



XT-2AF



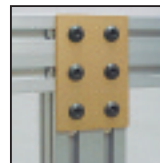
XT-2AF-M8

joining plate

for joining two XTensions together for a more ridged setup

PART #	SCREW (L)	HOLES
XT-JP-6	1/2"	6
XT-JP-8	1/2"	8
XT-JP-12	1/2"	12

Included: economy T-nuts and button head cap screws



XT-JP-6



XT-JP-8



XT-JP-12

angle bracket

for securing XTensions to each other (small to medium build-ups)

PART #	SCREW (L)	HOLES
XT-1A-4	1/2"	4
XT-2A-4	1/2"	4
XT-2A-6	1/2"	6
XT-2A-8	1/2"	8
XT-2A-M8*	M8, 1/2"	6

Included: economy T-nuts and button head cap screws

*metric



XT-2A-4



XT-2A-6

XT-2A-8



XT-1A-4

XT-2A-M8

angle brace

for maximum support of two perpendicular XTensions

PART #	LENGTH
XT-AB-12	12"
XT-AB-15	15"
XT-AB-18	18"

Included: economy T-nuts, button head cap screws, and washers



XT-AB-12



XT-AB-18

XT-AB-15

angle gusset

for securing XTensions to each other (medium to large build-ups)

PART #	SCREW (L)	HOLES
XT-1AG-4	1/2"	4
XT-2AG-4	1/2"	4
XT-2AG-8	1/2"	8
XT-3AG-4	1/2"	4
XT-3AG-8	1/2"	8

Included: economy T-nuts and button head cap screws



XT-3AG-8



XT-2AG-8

XT-1AG-4



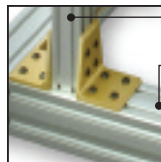
XT-2AG-4

angle transition

for securing XTensions with different widths to one another

PART #	SCREW (L)	SIDES
XT-2AT1-6	1/2"	1" & 2"
XT-2AT3-8	1/2"	2" & 3"

Included: economy T-nuts and button head cap screws



XT-2AT3-8



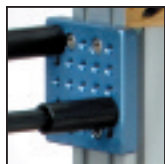
XT-2AT1-6

grid plate

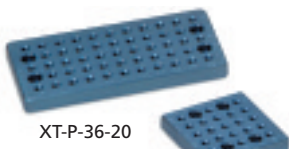
used where multiple R&R components need to be close together on an XTension

PART #	THREAD	DIMENSIONS
XT-P-33-20	1/4-20*	3" x 3" x 1/2"
XT-P-36-20	1/4-20*	3" x 6" x 1/2"
XT-P-9090-8M8**		90 x 90 x 13mm
XT-P-90165-8M8**		90 x 165 x 13mm

Included: economy T-nuts and 1/2" socket head cap screws



XT-P-33-20



XT-P-36-20



XT-P-33-20

*1/4-20 plates have holes 1/2" OC
**M8 plates have holes 15mm OC

end cap

for covering exposed ends of XTensions

PART #	SIZE
XT-EC-1	1" x 1"
XT-EC-1-2	1" x 2"
XT-EC-2	2" x 2"
XT-EC-3	3" x 3"



XT-EC-2

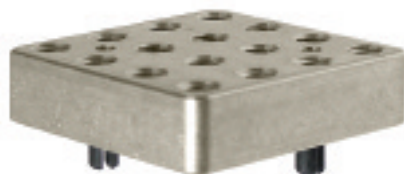
top plate

Added to the top of the XT2 XTensions, the top plate has threaded holes 1/2" on center and can be used to set components on top and support a part from beneath.

PART #	DIMENSIONS
XT-TP-20	2" x 2" x 1/2"



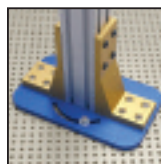
XT-TP-20



rotating base

When mounted to the XT2 XTensions, it enables the XTensions to be rotated to any angle to line up with the surface of a part for better support and location.

PART #	DIMENSIONS
XT-REB-20	5" x 8.25" x 3/8"



XT-REB-20

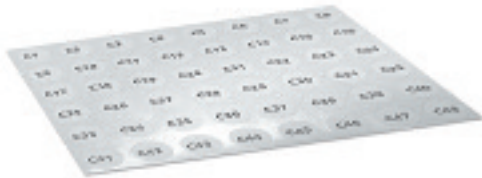


label dots

for recording the position of R&R components when a pivot T-nut is used



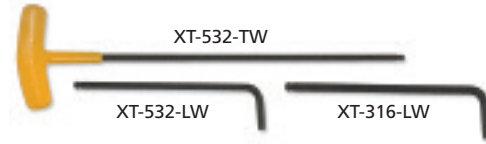
XT-Label



PART #	QTY
XT-Label	192 dots
4 sheets of dots labeled C1-C48	

wrench

for tightening nuts



PART #	DESCRIPTION
XT-532-TW	5/32" T-handle
XT-532-LW	5/32" L-wrench
XT-316-LW	3/16" L-wrench

cap screws



XT-BHCS-50

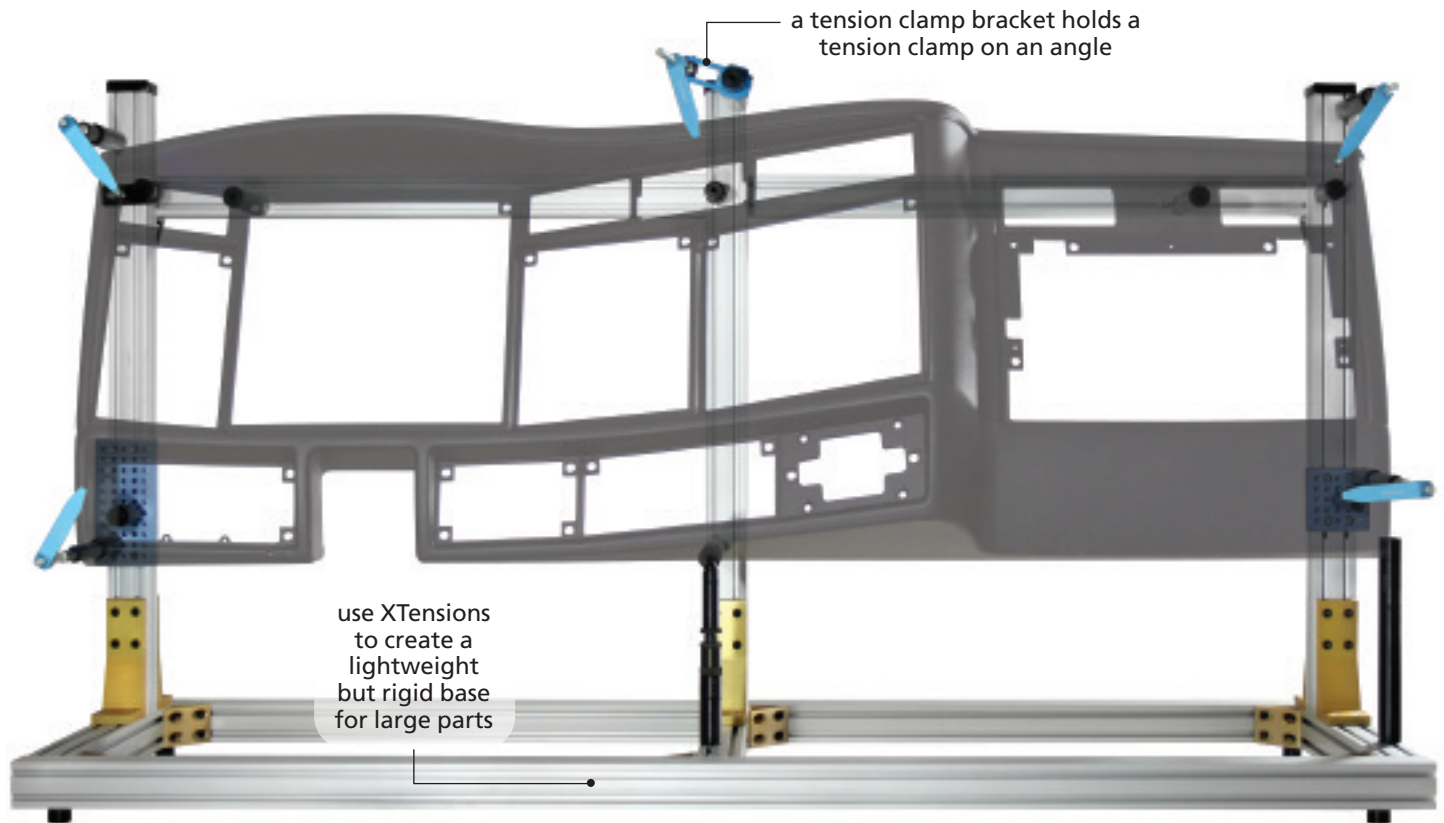
XT-SHCS-50

PART #	SIZE
BUTTON HEAD	
XT-BHCS-50	1/4-20 (1/2")
XT-BHCS-63	1/4-20 (5/8")
XT-BHCS-M8*	M8 (1.25x12)
SOCKET HEAD	
XT-SHCS-50	1/4-20 (1/2")
XT-SHCS-63	1/4-20 (5/8")
XT-LHSCS-M8*	M8 (1.25x16)
*metric	

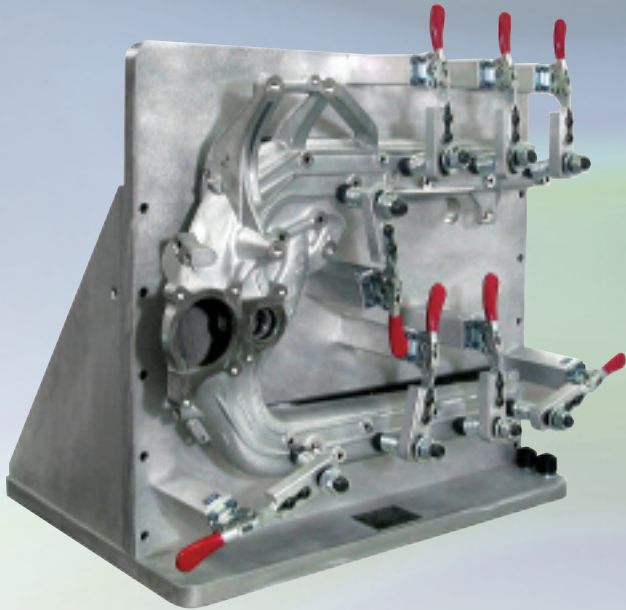
organizer box



PART #	DIMENSIONS
XT-Box	8" x 13" x 2"

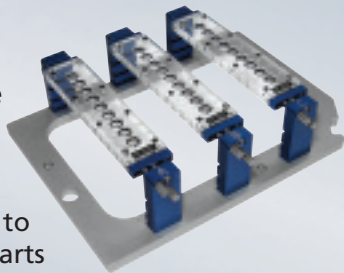


Specialized fixtures for your application



ONE STOP SHOP

When your application calls for something more specialized, we can provide you with special details and fixtures. Our fixtures can be designed to hold single or multiple parts at a time.



Because we are dedicated solely to CMM and vision fixturing, R&R can be your one stop shop for all your fixturing needs.

PROBLEM SOLVERS

With over 15 years of experience with touch probes and backlighting on both CMM and vision systems, we are able to design and build fixtures that are correct the first time. When it comes to probe clearances and accessing the part in the most efficient way, our expertise shows.

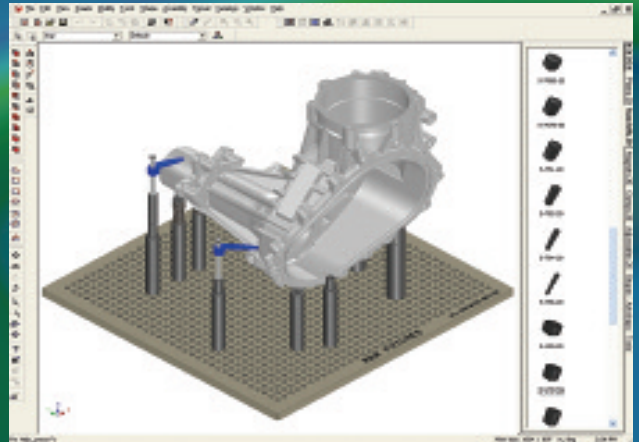


Our in-house design engineering staff will work with you to first concept and then fully design the best fixture for your application.

Call us at **800-847-6045** for more information.

Let R&R build you the right fixture for the right price.

Don't forget to document your fixture setup



FixtureBuilder is the 3D fixture modeling software from R&R that will help you document R&R fixture setups and do offline programming.

FIXTUREBUILDER IS IDEAL WHEN:

- there is more than one user
- the part will be inspected again
- you want to save time on offline programming
- showing documentation of the setup to customers or managers
- accuracy counts

IT'S A SNAP!

Simply drag and snap components from the tabbed catalogs onto your specific plate. As components are moved onto the base plate, IronCad's SmartSnap® technology automatically aligns the components while indicating the hole position on the plate as well as the X, Y, and Z coordinates. You can also import your part's CAD data into FixtureBuilder to be used for offline programming.



AUTOMATIC BUILD LIST

Once the setup is complete, FixtureBuilder gives you a step-by-step build list to recreate the setup the next time the part is inspected, including what was used and in what location it was.

For more information please contact us or visit our website at www.cmmfixture.com

When time and money are important FixtureBuilder can help!

The right fixture
at the right price.

www.cmmfixture.com

 **R&R Sales
and Engineering**

PO Box 161
Grand Haven, MI
49417

800-847-6045
616-847-6045
616-847-6082 fax
rrsales@cmmfixture.com email
www.cmmfixture.com